

Final Project Report

“Collection, conservation and characterization of under-utilized vegetable crops”

**PI of the project: Dr. M. Sangeeta Kuty
Assistant Professor
Department of Vegetable Science
College of Agriculture,
Kerala Agricultural University, Thrissur**

Introduction

The project entitled “Collection, conservation and characterization of under-utilised vegetable crops of Kerala” funded by Kerala State Biodiversity Board, aimed at survey, collection, characterization, database preparation and thereby conservation of indigenous fruit vegetables (majorly vegetables belonging to Solanaceae, Cucurbitaceae, Malvaceae and Convolvulaceae) grown across Kerala. As part of this project, surveys were conducted in all districts of Kerala and collected the details of various accessions of about 24 crops including their wild edible species. The selected accessions from the collection were characterized based on morphological parameters. Biochemical characters of selected accessions were also recorded. The database of about 400 accessions of different crops has been prepared. Standardization of protocol for production of dehydrated powder from calyx of *Hibiscus sabdariffa* was carried out and the biochemical characteristics of the dehydrated powder were also studied. The details of various accessions collected are included in this final project report.

I. Accessions collected and characterized under Solanaceae family

1. Cherry tomato [*Solanum lycopersicum* var *cerasiforme*]

- Location: Cheeral, Wayanad [Lat:11.604919°N, Long:76.310014°E]
- Name of farmer: Soman
- Uses: small fruits for culinary purpose
- Medicinal value: treats cancer
- Value addition: pickle and chutney
- Season of collection: September

Morphological observations

- Plant height : 177.7 cm
- Leaf shape : ovate with strong lobing
- Fruit length : 10 cm
- Fruit weight : 5.15g
- No of seeds : 25



2. Cherry tomato [*Solanum lycopersicum* var *cerasiforme*]

- Location: Attappadi, Palakkad [Lat:11.50°N, Long:76.350°E]
- Uses: fruits for culinary purposes
- Medicinal value: treats burns and sun scalds
- Value addition- pickles and chutney
- Season of collection: July

Morphological observations

- Plant height : 150 cm
- Leaf shape : ovate - oblong shape
- Fruit length : 12 cm
- Fruit weight : 4.2 g
- Fruit colour : red
- No of seeds : 32



3. Cherry tomato [*Solanum lycopersicum* var *cerasiforme*]

- Location: Vettickal, Vallakadavu, Idukki [Lat 9.60159°N, Long 77.20604° E]
- Name of farmer: Jain
- Uses: small fruits for culinary purposes,
- Medicinal value: treats burns and sun scalds
- Value addition: sauce, pickle, chutney
- Season of collection: November

Morphological observations

- Plant height : 267 cm
- Leaf shape : ovate
- Fruit length : 4.2 cm
- Fruit weight : 3.2 g
- No of seeds : 18



4. Cherry tomato [*Solanum lycopersicum* var *cerasiforme*]

- Location: Selliampara, Vellathooval, Idukki [Lat 9.9788°N, Long 77.0248° E]
- Name of farmer: Rojan George
- Uses: small fruits for culinary purposes
- Medicinal value: treats burns and sun scalds
- Value addition: pickle, sauce, chutney
- Season of collection: January



Morphological observations

- Plant height : 345 cm
- Leaf shape : ovate
- Fruit length : 2.4 cm
- Fruit weight : 2.6 g
- No of seeds : 10

5. Tomato [*Solanum lycopersicum*]

- Location: Anaviratty, Idukki, [Lat 10.014964°N, Long 76.991552°E]
- Name of farmer: Latha Ayyappan
- Uses: dark red fruits for culinary purposes
- Medicinal value: treats burns and sunscalds
- Value addition: sauce, sundried tomato, pickle
- Season of collection: November



Morphological observations

- Plant height : 130 cm
- Leaf shape : ovate
- Fruit length : 6.5 cm
- Fruit weight : 4.20 g
- No of seeds : 35

6. Tomato [*Solanum lycopersicum*]

- Location: Vellathooval, Idukki [Lat 9.9788° N, Long 77.0248° E]
- Name of farmer: George Varghese
- Uses: large sized fruits for culinary purpose

- Medicinal value: treats burns and sunscalds
- Value addition: ketchup, sauce
- Season of collection: January

Morphological observations

- Plant height : 400 cm
- Leaf shape : Ovate with intermediate lobing
- Fruit length : 9.4 cm
- Fruit weight : 12 g
- No of seeds : 45



7. Black night shade [*Solanum americanum*]

- Location: Vagamon, Idukki [Lat:9.4153°N, Long:76.5437°E]
- Uses: small sized fruits for culinary purpose
- Medicinal value: antibacterial
- Value addition: pickle, jelly, chutney, vattal
- Season of collection: July

Morphological observations

- Plant height : 88.2 cm
- Leaf shape : ovate with strong lobing
- Fruit length : 0.68 cm
- Fruit weight : 2 g
- No of seeds : 70
- No of fruits : 140



8. Black night shade [*Solanum americanum*]

- Location : Attappady, Palakkad [Lat:11.50°N, Long:76.350°E]
- Uses: small sized fruits for culinary purpose
- Medicinal value: improves blood conditions
- Value addition: pickle, chutney, vattal
- Season of collection: July

Morphological observations

- Plant height : 345 cm
- Leaf shape : ovate
- Fruit length : 2.4 cm
- Fruit weight : 2.6 g
- No of seeds : 1

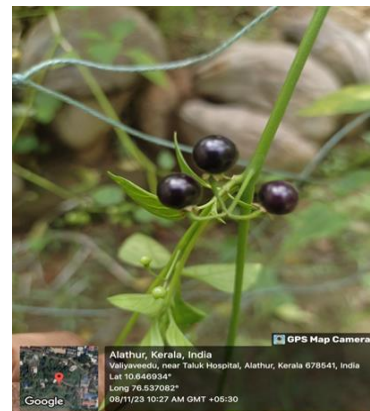


9. Black night shade [*Solanum americanum*]

- Location : Alathur, Palakkad [Lat 10.6470°N, Long 76.5378°E]
- Name of farmer: Shaila
- Uses: smaller fruits for culinary purpose
- Medicinal value: treats cough and indigestion
- Value addition: chutney, pickle, vattal
- Season of collection: November

Morphological observations

- Plant height : 67 cm
- Leaf shape : cordate
- Fruit length : 0.5 cm
- Fruit weight : 2.2 g
- No of seeds : 6-7



10. Black night shade [*Solanum americanum*]

- Location: Sulthan Bathery, Wayanad [Lat 11.6801°N, Long 76.3614°E]
- Name of farmer: Gopi
- Uses: culinary
- Medicinal value: headache, ulcer, wound
- Value addition: chutney, pickle, vattal
- Season of collection: June

Morphological observations

- Small round black shiny fruits
- Leaf shape: ovate
- Fruit length: 0.66cm
- Fruit breadth: 0.99cm
- Fruit weight: 0.23g
- Number of seeds: 1240
- Number of fruits: 60



11. Black night shade [*Solanum americanum*]

- Location: Vythiri, Wayanad [Lat 11.5555°N, Long 76.0066°E]
- Name of farmer: Satheesh
- Uses: culinary
- Medicinal value: treat cough and indigestion
- Value addition: chutney, vattal
- Season of collection: June

Morphological observations

- Small round black shiny fruits
- Leaf shape: ovate
- Fruit length: 0.63cm
- Fruit breadth: 0.92cm
- Fruit weight: 0.24g
- Number of seeds: 1240
- Number of fruits: 72



12. Insane night shade (*Solanum insanum*)

- Location: Sulthan bathery, Wayanad [lat 11.680124°N, Long 76.361425°E]
- Name of farmer: Raju
- Uses: culinary
- Medicinal value: anti-microbial, anti-cancer
- Value addition: pickle, vattal
- Season of collection: June

Morphological observations

- Small Round green with white mottling and yellow when ripe
- More spines on leaf and stem
- Leaf shape: ovate
- Fruit length: 2.4cm
- Fruit breadth: 2.5cm
- Fruit weight: 9.05g
- Number of seeds: 240
- Number of fruits: 30



13. Sugar mulak (*Solanum pseudocapsicum*)

- Location : Punnamchola, Malappuram (Lat:10.898708°N, Long:76.114223°E)
- Name of farmer : Ambika
- Eaten by sugar patients
- Medicinal value: anti-microbial, anti-inflammatory
- Value addition: pickle, powder

Morphological observations

- Plant height : 100 cm
- Leaf shape : ovate-oblong
- Fruit length : 5-6 cm
- Fruit weight : 3.2 g
- No of seeds : 8-10



14. Sugar mulak [*Solanum pseudocapsicum*]

- Location: Sulthan bathery, Wayanad [Lat 11.680124°N, Long 76.361425°E]
- Name of farmer: Raju
- Uses: culinary
- Medicinal value: anti-microbial, anti-inflammatory
- Value addition: powder, pickle

Morphological observations

- Small Round green fruits turn orange when ripe
- Leaf shape: ovate
- Fruit length: 1.4cm
- Fruit breadth: 3.7cm
- Fruit weight: 1.09g
- Number of seeds: 46
- Number of fruits: 38



15. Njottajodiyan [*Physalis peruviana*]

- Location: Cheeral, Wayanad [Lat:11.604919°N, Long:76.310014°E]
- Name of farmer: Soman
- Uses: orange- coloured small fruits are used for culinary purpose
- Medicinal value: treats diabetics
- Value addition: dehydrated product, pickle
- Season of collection: September

Morphological observations

- Plant height : 124 cm

- Leaf shape : cordate
- Fruit length : 2.5 cm
- Fruit weight : 4.3 g
- No of seeds : 4-5
- No of fruits : 60



16. Njottajodiyan [*Physalis peruviana*]

- Location : Kalpetta, Wayanad [Lat 11.6103°N, Long 76.0828°E]
- Name of farmer : Salim
- Uses: small orange- coloured fruits used for culinary purposes
- Medicinal value: treats diabetics
- Value addition: pickle, chutney
- Season of collection: June

Morphological observations

- Plant height : 105 cm
- Leaf shape : ovate to cordate
- Fruit length : 3 cm
- Fruit weight : 5 g
- No of seeds : 5-7
- No of fruits : 76



17. Brinjal [*Solanum melongena*]

- Location : Purakkadi, Wayanad (Lat:11.6868°N, Long:76.1538°E)
- Uses: large sized fruits used for culinary
- Medicinal value: anti-inflammatory
- Value addition: pickle, kondattam
- Season of collection: September

Morphological observations

- Plant height : 180 cm
- Leaf shape : Broadly cordate
- Fruit length : 14 cm
- Fruit weight : 34 g
- No of seeds : 69
- No of fruits : 25



18. Orange kathiri [*Solanum melongena*]

- Location: Paloorkavu, Idukki (Lat:9.5371°N, Long:76.9386°E)
- Name of farmer : Jose
- Uses: fruits for culinary purpose
- Medicinal value: treat reproductive problems
- Value addition: pickle, kondattam
- Season of collection: July

Morphological observations

- Plant height : 95.6 cm
- Leaf shape : ovate with strong lobing
- Fruit length : 4 cm
- Fruit weight : 13 g
- No of seeds : 81
- No of fruits : 42



19. Round Brinjal (Nadan vazhuthana) [*Solanum melongena*]

- Location: Attappady, Palakkad (Lat:11.50°N, Long:76.350°E)
- Uses: egg shaped glossy fruits for culinary and kondattam purpose
- Medicinal value: anti-inflammatory
- Value addition: pickle
- Season of collection: July

Morphological observations

- Plant height : 33.5 cm
- Leaf shape : broadly ovate with intermediate lobing
- Fruit length : 18 cm
- Fruit weight : 125 g
- No of fruits : 7



20. White brinjal [*Solanum melongena*]

- Location : Attappady, Palakkad (Lat:11.50°N, Long:76.350°E)
- Uses: white fruits for culinary purposes
- Nutritive value: rich in vitamin A and C
- Value addition: pickle, kondattam
- Season of collection: July

Morphological observations

- Plant height : 120 cm
- Leaf shape : ovate
- Fruit length : 8 cm
- Fruit weight : 12 g
- No of seeds : 40
- No of fruits : 36



21. Malagha vazhuthana [*Solanum melongena*]

- Location : Nedumanghad, Trivandrum [Lat 8.6490°N, Long 77.1015°E]
- Name of farmer : Sajan
- Uses: white fruits for culinary purpose
- Medicinal value: treat cholera
- Value addition: pickle
- Season of collection: January

Morphological observations

- Long and slender purple colour fruit
- Plant height : 75 cm
- Leaf shape : ovate-oblong
- Leaf length : 32 cm
- Leaf breadth : 26 cm



22. Mathur brinjal [*Solanum melongena*]

- Location : Mathur, Palakkad [Lat 10.7479° N, Lon 76.5662° E]
- Name of farmer : Swaminathan
- Uses: violet fruits for culinary purpose
- Medicinal value: anti-inflammatory
- Value addition: pickle
- Season of collection: July

Morphological observations

- Violet oblong fruit
- Leaf shape : lobed
- Fruit length : 7 cm
- Fruit weight : 7.4 g
- No of fruits : 17
- No of seeds : 200-250



23. Keralaserry vazhuthana [*Solanum melongena*]

- Location : Keralassery, Wayanad (Lat: 10.8297 °N, Long: 76.4982°E)
- Name of farmer : Krishnankutty C M
- Uses: small violet-coloured fruits for culinary purpose
- Medicinal value: anti-inflammatory
- Value addition: pickle
- Season of collection: July



Morphological observations

- Plant height : 62.75 cm
- Leaf shape : ovate with intermediate lobing
- Fruit length : 8.8 cm
- Fruit weight : 56.9 g
- No of fruits : 74
- No of seeds : 400-425

24. Thakkali vazhuthana [*Solanum macrocarpon*]

- Location: Thazhekcode, Malapuram [Lat: 10.9619° N, Long: 76.3039° E]
- Name of farmer: Suhara
- Uses: dark orange-coloured fruits used for culinary purposes
- Medicinal value: anti-inflammatory
- Value addition: pickle
- Season of collection: October

Morphological observations

- Plant height : 88 cm
- Leaf shape : Lance to oblong leaves
- Fruit length : 7.5 cm
- Fruit weight : 64.78 g
- No of fruits : 29
- No of seeds : 350-380

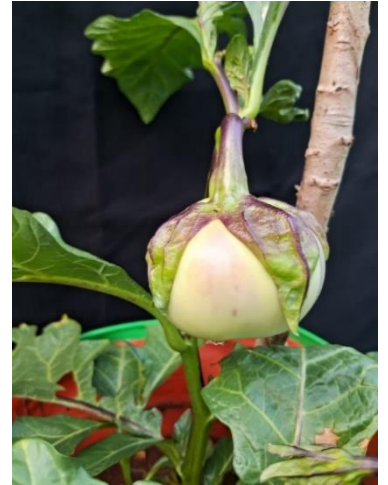


25. Thakkali vazhuthana [*Solanum macrocarpon*]

- Location: Paloorkkavu, Idukki [Lat:9.5371°N, Long: 76.9386°E]
- Name of farmer: Jose
- Uses: culinary
- Medicinal value: antidiabetic, laxative
- Nutritive value: rich in antioxidants
- Value addition: pickle
- Season of collection: July

Morphological observations

- Round white fruit
- Leaf shape: broadly ovate
- Fruit length: 4cm
- Fruit breadth: 3cm
- Fruit weight: 92g
- Number of seeds:1240
- Number of fruits: 9



26. Cheruvazhuthana [*Solanum melongena*]

- Location : Kottakakathu, Vellathooval, Idukki [Lat 9.9788° N, Long 77.0248° E]
- Name of farmer : Johnson
- Uses: fruits with more number of seeds are used for culinary purpose
- Nutritive value: rich in antioxidants
- Value addition: pickle
- Season of collection: January

Morphological observations

- Plant height : 120 cm
- Leaf shape : Lance to oblong leaves
- Fruit length : 1.2 cm
- Fruit weight : 4.6 g
- No of fruits : 108
- No of seeds : 250-280



27. Turkey berry [*Solanum insanum*]

- Location : Paloorkavu, Idukki [Lat:9.5371°N, Long;76.9386°E]
- Name of farmer : Jose
- Uses : small sized fruits for culinary purpose and making kondattam
- Medicinal value: anti-inflammatory
- Value addition: pickle
- Season of collection: July

Morphological observations

- Plant height : 163 cm
- Leaf shape : broad oval shape
- Fruit length : 1.9 cm
- Fruit weight : 2.2 g
- No of seeds : 9



28. Turkey berry [*Solanum insanum*]

- Location : Parambikulam, Palakkad [Lat:10.4667°N, Long;76.8333°E]
- Uses : globular berries for culinary purpose
- Medicinal value: antimicrobial
- Value addition: tea, powder
- Season of collection: July

Morphological observations

- Plant height : 97 cm
- Leaf shape : ovate
- Fruit length : 1.9 cm
- Fruit weight : 7 g
- No of seeds : 54
- No of fruits : 82



29. Turkey berry [*Solanum torvum*]

- Location: Kalpetta, Wayanad [Lat11.6103°N, Long 76.0828°E]
- Name of farmer: Saleem
- Uses: culinary
- Medicinal value: anti-microbial, anti-cancer
- Value addition: pickle
- Season of collection: june

Morphological observations

- Round green fruits
- Leaf shape: large ovate
- Fruit length: 1.55cm
- Fruit breadth: 1.35cm
- Fruit weight: 1.19g
- Number of seeds: 320
- Number of fruits: 25



30. Turkey berry [*Solanum torvum*]

- Location: Sulthan Bathery, Wayanad [Lat:11.6801°N, Long: 76.3614°E]
- Name of farmer: Raju
- Uses: culinary
- Medicinal value: anti-microbial, anti-cancer
- Value addition: pickle
- Season of collection: July

Morphological observations

- Round green fruits
- Leaf shape: large ovate
- Fruit length: 1.58cm
- Fruit breadth: 1.32cm
- Fruit weight: 1.2g
- Number of seeds: 280
- Number of fruits: 28



31. Puthari chunda [*Solanum violaceum*]

- Location: Sulthan Bathery, Wayanad [Lat: 11.6801°N, Long: 76.3614°]
- Name of farmer: Raju Wayanad
- Uses: culinary
- Medicinal value: carminative, antimicrobial
- Value addition: pickle, vattal
- Season of collection: June

Morphological observations

- Small round green fruits
- Leaf shape: ovate and spiny
- Fruit length: 0.83cm
- Fruit breadth: 0.79cm
- Fruit weight: 0.3g
- Number of seeds: 19
- Number of fruits: 158



32. Chunda [*Solanum viarum*]

- Location: Odavayal, Wynd [Lat: 11.5978°N, Long: 76.1864°E]
- Name of farmer: Satheesh Wayanad
- Uses: culinary
- Medicinal value: anti-microbial, anti-cancer
- Value addition: vattal
- Season of collection: June

Morphological observations

- Round green with white mottling and yellow when ripe
- Leaf shape: ovate & highly spiny
- Fruit length: 1.7cm
- Fruit breadth: 2.5cm
- Fruit weight: 5.5g
- Number of seeds: 320
- Number of fruits: 85



33. Edayur chilli [*Capsicum annuum*]

- Location : Venniyoor, Malappuram [Lat:11.0236°N, Long:75.9591°E]
- Name of farmer : Sukoor
- Less spicy, long fruited, High yielding

- Uses: culinary, kondattam
- Medicinal value: manage glucose level
- Value addition: pickle, dehydrated chilli powder
- Season of collection: August



Morphological observations

- Plant height : 85 cm
- Leaf shape : ovate with no lobing
- Fruit length : 15-20 cm
- Fruit weight : 5.15 g
- No of seeds : 25

34. White kanthari [*Capsicum frutescens*]

- Location : Attappady, Palakkad [Lat:11.50°N Long:76.350°E]
- More pungent
- Uses: culinary, kondattam
- Medicinal value: treat cough, toothache
- Value addition: pickle, dehydrated powder
- Season of collection: July

Morphological observations

- Plant height : 70 cm
- Leaf shape : ovate - lanceolate
- Fruit length : 2.5 cm
- Fruit weight : 0.6 g
- No of seeds : 9



35. Chilli [*Capsicum annuum*]

- Location : Attappady, Palakkad [Lat:11.50°N Long:76.350°E]
- High pungency
- Uses: culinary, kondattam
- Medicinal value: treat cough and tooth ache
- Value addition: pickle, dehydrated chilli powder
- Season of collection: July

Morphological observations

- Plant height : 80 cm
- Leaf shape : ovate - lanceolate
- Fruit length : 3 cm
- Fruit weight : 2 g



- No of seeds : 17

36. Chilli [*Capsicum annuum*]

- Location: Attappady, Palakkad [Lat:11.50°N Long:76.350°E]
- Pungent fruits
- Uses: culinary, kondattam
- Medicinal value: treat cough and tooth ache
- Value addition: pickle, dehydrated chilli powder
- Season of collection: July

Morphological observations

- Plant height : 50 cm
- Leaf shape : ovate - lanceolate
- Fruit length : 1.7 cm
- Fruit weight : 0.5 g
- No of seeds : 6



37. Kodali mulak [*Capsicum annuum*]

- Location: Varavoor, Thrissur [Lat 10.7204°N, Long 76.2253° E]
- Name of farmer: Reshmi Shaji
- Uses: culinary, kondattam
- Medicinal value: treat cough and tooth ache
- Value addition: pickle, dehydrated chilli powder
- Season of collection: July

Morphological observations

- Plant height : 55 cm
- Leaf shape : ovate - lanceolate
- Fruit length : 2.5 cm
- Fruit weight : 0.9 g
- No of seeds : 23



38. Bhaskara mulak [*Capsicum annuum*]

- Location : Varavoor, Thrissur [Lat 10.7204° N, Long 76.2253° E]
- Name of farmer : Reshmi Shaji
- Long and slender fruits
- Uses: culinary, kondattam
- Medicinal value: treat cough and tooth ache
- Value addition: pickle, dehydrated chilli powder
- Season of collection: July

Morphological observations

- Plant height: 70 cm
- Leaf shape: ovate - lanceolate
- Fruit length: 2.1 cm
- Fruit weight: 1.5 g
- No of seeds: 15



39. Munthiri mulak [*Capsicum annuum*]

- Location : Varavoor, Thrissur [Lat 10.7204° N, Long 76.2253° E]
- Name of farmer : Reshmi Shaji
- Highly pungent fruits
- Uses: culinary, kondattam
- Medicinal value: treat cough and tooth ache
- Value addition: pickle, dehydrated chilli powder
- Season of collection: July

Morphological observations

- Plant height : 68 cm
- Leaf shape : ovate - lanceolate
- Fruit length : 1.7 cm
- Fruit weight : 0.8 g
- No of seeds : 8



40. Kanthari mulak [*Capsicum frutescens*]

- Location : Elathur, Kozhikode [Lat ; 11.3270°N, Long; 75.7449°E]
- Name of farmer : Rajamohanan Pillai
- Small green fruits
- Uses: culinary
- Medicinal value: treat cough and head ache
- Value addition: pickle
- Season of collection: September

Morphological observations

- Plant height : 60 cm
- Leaf shape : ovate - lanceolate
- Fruit length : 1.3 cm
- Fruit weight : 0.5 g
- No of seeds : 6

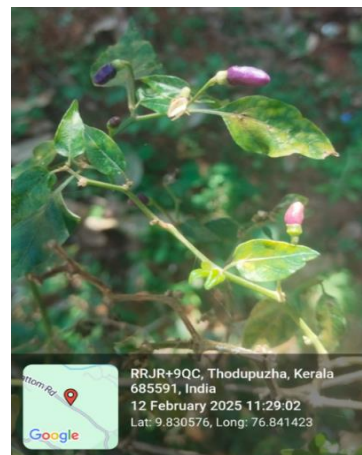


41. Violet Kanthari mulak [*Capsicum frutescens*]

- Location : Vettickal, Vallakadavu, Idukki [Lat 9.6015° N, Long 77.2060° E]
- Name of farmer : Greeshma
- Small violet fruits
- Uses: culinary
- Medicinal value: treat cough and head ache
- Value addition: pickle
- Season of collection: November

Morphological observations

- Plant height : 50 cm
- Leaf shape : ovate - lanceolate
- Fruit length : 1.7 cm
- Fruit weight : 0.4 g
- No of seeds : 5

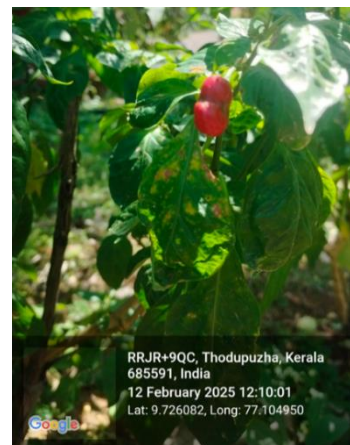


42. Mali mulak [*Capsicum annum*]

- Location : Vettickal, Vallakadavu, Idukki [Lat 9.6015° N, Long 77.2060° E]
- Name of farmer : Kiran
- Round fruits
- Uses: culinary
- Medicinal value: treat cough and head ache
- Value addition: pickle
- Season of collection: November

Morphological observations

- Plant height : 85 cm
- Leaf shape : ovate - lanceolate
- Fruit length : 2.5 cm
- Fruit weight : 1.0 g
- No of seeds : 7-10



43. White kanthari [*Capsicum frutescens*]

- Location : Odakkacity, Vellathooval, Idukki [Lat 9.9788° N, Long 77.0248° E]
- Name of farmer: Shemeela
- Small white fruits
- Uses: culinary
- Medicinal value: treat cough and head ache
- Value addition: pickle
- Season of collection: January

Morphological observations

- Plant height : 100 cm
- Leaf shape : ovate - lanceolate
- Fruit length : 2.0 cm
- Fruit weight : 0.6 g
- No of seeds : 7-10



44. Pancharakolli mulak [*Capsicum annum*]

- Location : Vellathooval, Idukki [Lat 9.9788° N, Long 77.0248° E]
- Name of farmer : George Varghese
- Long fruits with low pungency
- Uses: culinary
- Medicinal value: treat headache and cough
- Value addition: pickle
- Season of collection: January

Morphological observations

- Plant height : 150 cm
- Leaf shape : ovate - lanceolate
- Fruit length : 7-8 cm
- Fruit weight : 1.2 g
- No of seeds : 18



45. Neymulak [*Capsicum annum*]

- Location : Adichil, Thrissur [Lat 10.5303° N, Long 76.2147° E]
- Name of farmer : Aisal Kochumon
- Fruit with flavour of ghee
- Uses: culinary
- Medicinal value: treat head ache and cough
- Value addition: pickle
- Season of collection: March

Morphological observations

- Plant height : 130 cm
- Leaf shape : ovate - lanceolate
- Fruit length : 1-2 cm
- Fruit weight : 0.8 g
- No of seeds : 20



46. Jolokia mulak [*Capsicum annum*]

- Location : Adichil, Thrissur [Lat: 10.5303° N , Long: 76.2147° E]
- Name of farmer : Aisal Kochumon
- Highly pungent fruits
- Uses: culinary
- Medicinal value: treat head ache and cough
- Value addition: pickle
- Season of collection: March



Morphological observations

- Plant height : 180 cm
- Leaf shape : ovate - lanceolate
- Fruit length : 3 cm
- Fruit weight : 1.2 g
- No of seeds : 1

47. Undamulak (*Capsicum sps.*)

- Location : Adichil, Thrissur [Lat: 10.5303° N , Long: 76.2147° E]
- Name of farmer : Aisal Kochumon
- Small white fruits
- Uses: culinary
- Medicinal value: treat head ache and cough
- Value addition: pickle
- Season of collection: March



Morphological observations

- Plant height : 90 cm
- Leaf shape : ovate - lanceolate
- Fruit length : 1.2 cm
- Fruit weight : 0.8 g
- No of seeds : 9

48. Ezhumattor mulak [*Capsicum annum*]

- Location : Ezhumattor, Pathanamthitta [Lat: 9.4212° N, Long: 76.7019° E]
- Name of farmer : Thomas John
- Drought resistant, high yielding, tall plants
- Uses: culinary

- Medicinal value: treat headache and cough
- Value addition: pickle
- Season of collection: February

Morphological observations

- Plant height : 180 cm
- Leaf shape : ovate - lanceolate
- Fruit length : 4 cm
- Fruit weight : 1.4 g
- No of seeds : 20



49. Palmulak [*Capsicum annum*]

- Location : Ezhumattoor, Pathanamthitta [Lat: 9.4212° N, Long: 76.7019° E]
- Name of farmer : Thomas John
- Fruit with smell of milk
- Uses: culinary
- Medicinal value: treat headache and cough
- Value addition: pickle
- Season of collection: February



Morphological observations

- Fruit length : 3.2 cm
- Fruit weight : 1.5 g
- No of seeds : 14

II. Accessions collected and characterized under Cucurbitaceae family

50. Vaidyar Kumbalam [*Benincasa hispida*]

- Location : Kadampuzha, Malappuram [Lat:10.953°N, Long:76.0242°E]
- Name of farmer : Avarankutty
- Uses: culinary and medicine
- Medicinal value: preparation of rasayanam
- Value addition: candy
- Season of collection: August

Morphological observations

- No of main branches : 2
- Leaf shape : Kidney-shaped
- Fruit length : 15 cm
- Fruit weight : 550 g



- Fruit breadth : 5 cm
- No of seeds : 45

51. Neykumbalam [*Benincasa hispida*]

- Location : Paloorkavu, Idukki [Lat:9.5371°N, Long:76.9386°E]
- Name of farmer : Jose
- Big and tasty fruits
- Uses: culinary
- Medicinal value: treat kidney disease and fever
- Value addition: pickle
- Season of collection: January



Morphological observations

- No of main branches : 3
- Leaf shape : Cordate
- Fruit length : 7.5 cm
- Fruit weight : 230 g
- Fruit breadth : 4.5 cm
- No of seeds : 50

52. Nadankumbalam [*Benincasa hispida*]

- Location : Paloorkavu, Idukki [Lat: 9.537142°N, Long: 76.938652°E]
- Name of farmer : Jose
- Big fruits
- Uses: culinary
- Medicinal value: treat kidney disease and fever
- Value addition: pickle
- Season of collection: January



Morphological observations

- No of main branches : 2
- Leaf shape : Kidney shape
- Fruit length : 8.8 cm
- Fruit weight : 450 g
- Fruit breadth : 5.3 cm
- No of seeds : 70

53. Neykumbalam (*Benincasa hispida*)

- Location : Harippad, Alappuzha [Lat: 9.297593°N, Long: 76.417802°E]
- Name of farmer : Vani
- Pear shaped fruits
- Uses: culinary
- Medicinal value: treat fever
- Value addition: pickle
- Season of collection: January

Morphological observations

- No of main branches : 3
- Leaf shape : Reniform shape
- Fruit length : 7.5 cm
- Fruit weight : 350 g
- Fruit breadth : 4.8 cm
- No of seeds : 65



54. Neykumbalam [*Benincasa hispida*]

- Location : Harippad, Alappuzha [Lat: 9.2818°N, Long: 76.4442°E]
- Name of farmer : Vani
- Uses: culinary
- Medicinal value: treat kidney disease and fever
- Value addition: pickle
- Season of collection: January

Morphological observations

- Green, round to oval small fruit
- Leaf shape : Reniform, orbicular
- Fruit length : 16 cm
- Fruit weight : 130 g
- No of fruits : 17
- No of seeds : 15



55. Kumbalam [*Benincasa hispida*]

- Location : Cherthala, Alappuzha [Lat: 9.6741°N, Long: 76.3401°E]
- Name of farmer : Prakasan
- Small fruits
- Uses: culinary
- Medicinal value: treat kidney disease and fever
- Value addition: pickle
- Season of collection: March



Morphological observations

- No of main branches : 2
- Leaf shape : heart-shaped
- Fruit length : 6.5 cm
- Fruit weight : 9.78 g
- Fruit breadth : 5.8 cm
- No of seeds : 57

56. Neykumbalam [*Benincasa hispida*]

- Location : Manivayal, Wayanad [Lat: 11.6009°N, Long: 76.0813°E]
- Name of farmer: Sreeranjana
- Uses: culinary
- Medicinal value: laxative and diuretic
- Value addition: rasayana
- Season of collection: June

Morphological observations

- No of main branches : 4
- Leaf shape : heart-shaped
- Fruit length : 4.5 cm
- Fruit weight : 165 g
- Fruit breadth : 3.7 cm
- No of seeds : 24



57. Neykumbalam (*Benincasa hispida*)

- Location : Cheelachuvadu, Idukki [Lat: 9.9182°N, Long: 76.9621°E]
- Name of farmer : Sebastin
- Uses: culinary
- Medicinal value: anti- inflammatory
- Value addition: pickle
- Season of collection: January

Morphological observations

- Fruit length : 4.8 cm
- Fruit weight : 150 g
- Fruit breadth : 3.4cm
- No of seeds : 19



58. Neykumbalam [*Benincasa hispida*]

- Location : Attapalam, Kumily, Idukki [Lat: 9.6161°N, Long: 77.1582°E]
- Name of farmer : Jessy
- Long fruits
- Uses: culinary
- Medicinal value: anti- inflammatory
- Value addition: pickle, juice
- Season of collection: February

Morphological observations

- Fruit length : 25 cm
- Fruit weight : 1.2 kg
- Fruit breadth : 9.4 cm
- No of seeds : 76



59. Kumbalam [*Benincasa hispida*]

- Location : Selliampara, Idukkki [Lat: 9.9950° N, Long: 77.0190°E]
- Name of farmer : Thomas Varkey
- Big fruits
- Uses: culinary
- Medicinal value: anti inflammatory
- Value addition: juice
- Season of collection: February

Morphological observations

- Fruit length : 27.5 cm
- Fruit weight : 946 g



- Fruit breadth : 10 cm
- No of seeds : 94

60. Kumbalam [*Benincasa hispida*]

- Location : Alakkode, Thodupuzha, Idukki [Lat 12.1910° N, Long 75.4673° E]
- Name of farmer : Antony
- Uses: culinary
- Medicinal value: anti inflammatory
- Value addition: juice
- Season of collection: March

Morphological observations

- Fruit shape : Oval to oblong
- Fruit length : 19.5 cm
- Fruit weight : 1.2 kg
- Fruit breadth : 12.5 cm
- No of seeds : 83



61. Neykumbalam [*Benincasa hispida*]

- Location : Nadathara, Thrissur [Lat: 10.5052° N, Long: 76.2696° E]
- Name of farmer : Gopi N. K
- Uses: culinary
- Medicinal value: anti inflammatory
- Value addition: rasayana, jam
- Season of collection: March

Morphological observations

- Fruit shape : Round
- Fruit length : 7.5 cm
- Fruit weight : 320 g
- Fruit breadth : 4.5 cm
- No of seeds : 30

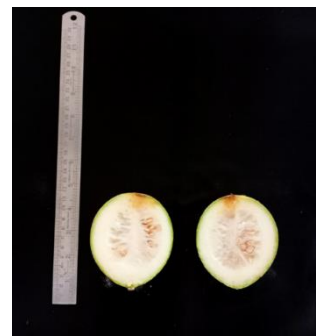


62. Neykumbalam [*Benincasa hispida*]

- Location : Irinjalakkuda, Thrissur [Lat: 10.3469° N, Long: 76.2074° E]
- Name of farmer : Sushirambaran
- Uses: culinary
- Medicinal value: anti inflammatory
- Value addition: rasayana, jam
- Season of collection: March

Morphological observations

- Fruit shape : Round
- Fruit length : 8.5 cm
- Fruit weight : 465 g
- Fruit breadth : 5.2 cm
- No of seeds : 23

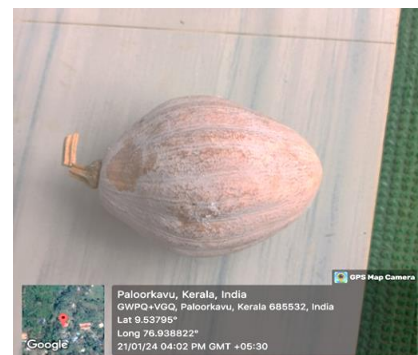


63. Cheru mathan [*Cucurbita moschata*]

- Location : Paloor kavu, Idukki (Lat: 9.5371°N, Long: 76.9386°E)
- Name of farmer : Jose
- Uses: culinary
- Medicinal value: anti diabetic
- Value addition: wine, jam, pickle, powder
- Season of collection: July

Morphological observations

- Dark green to green colour fruit
- Leaf shape : tri-lobed form
- Fruit length : 23.5 cm
- Fruit weight : 720 g
- No of seeds : 76
- No of fruits : 6

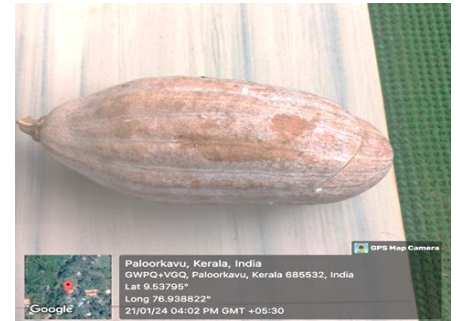


64. Mathan [*Cucurbita moschata*]

- Location : Mattilayam, Wayanad (Lat: 11.7423°N, Long: 75.8519°E)
- Name of farmer : Abraham
- Uses: culinary
- Medicinal value: regulate blood pressure
- Value addition: jam, powder
- Season of collection: September

Morphological observations

- Long fruits
- Leaf shape : tri-lobed form
- Fruit length : 25.6 cm
- Fruit weight : 840 g
- No of seeds : 56
- No of fruits : 8



65. Oorali mathan [*Cucurbita moschata*]

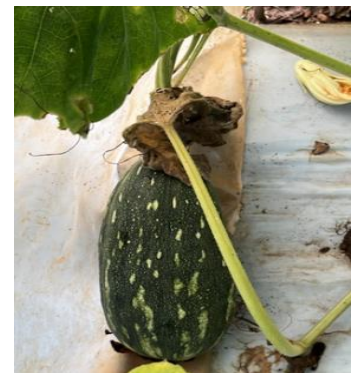
- Location : Vellangallor, Thrissur [Lat: 10.3031° N, Long: 76.2090° E]
- Name of farmer : Shaila
- Uses: culinary
- Medicinal value: treats burns and sun scald
- Value addition: jam, powder, pickle

Morphological observations

- Dark orange to green- coloured bigger fruits
- Leaf shape : tri-lobed form
- Fruit length : 20.5 cm
- Fruit weight : 980 g
- No of seeds : 64
- No of fruits : 5

Biochemical observations

- DPPH free radical scavenging activity : 30.08%
- Total phenol content : 39.8 $\mu\text{g g}^{-1}$ FW
- Total flavonoid content : 15.9 mg GAE g^{-1}
- Vitamin C : 0.135 mg 100 g^{-1}



66. Attappady mathan [*Cucurbita moschata*]

- Location: Attappady, Palakkad (Lat: 11.50°N Long: 76.350°E)
- Uses: culinary
- Medicinal value: treats burns and sun scald

- Value addition: jam, powder

Morphological observations

- Dark orange-coloured bigger fruits
- Leaf shape : oval tri-lobed form
- Fruit length : 13.5 cm
- Fruit weight : 1.5 kg
- No of seeds : 120
- No of fruits : 4

Biochemical observations

- DPPH free radical scavenging activity : 38.54%
- Total phenol content : 56.43 $\mu\text{g g}^{-1}$ FW
- Total flavonoid content : 9.44 mg GAE g^{-1}
- Vitamin C : 0.153 mg 100 g^{-1}



67. Nadan mathan [*Cucurbita moschata*]

- Location : Harippad, Alappuzha [Lat: 11.6009°N, Long: 76.0813°E]
- Name of farmer : Sreekumar
- Uses: culinary
- Medicinal value: regulate blood pressure
- Value addition: jam, powder, pickle
- Season of collection: June

Morphological observations

- Pear shaped, dark orange colour fruit
- Leaf shape : Oval tri-lobed form
- Fruit length : 14 cm
- Fruit weight : 1.5 kg
- No of seeds : 125
- No of fruits : 4



68. Nadan mathan [*Cucurbita moschata*]

- Location : Manivayal, Wayanad [Lat: 11.6009°N, Long: 76.0813°E]
- Name of farmer : Sreerangan
- Uses: culinary
- Medicinal value: reduce blood pressure and cholesterol
- Value addition: jam, pickle
- Season of collection: June

Morphological observations

- Dark orange colour fruit
- Leaf shape : oval tri-lobed form
- Fruit length : 16 cm
- Fruit weight : 1.2 kg
- No of seeds : 145
- No of fruits : 5



69. Cherumathan [*Cucurbita moschata*]

- Location : Attappady, Palakkad (Lat: 11.50°N, Long: 76.350°E)
- Name of farmer : Ponnann
- Uses: culinary
- Medicinal value: reduce blood pressure and cholesterol
- Value addition: jam, pickle, powder
- Season of collection: July

Morphological observations

- Dark orange coloured oval fruit
- Leaf shape : Oval-ovate tri-lobed form
- Fruit length : 12.5 cm
- Fruit weight : 940 g
- No of seeds : 134
- No of fruits : 3

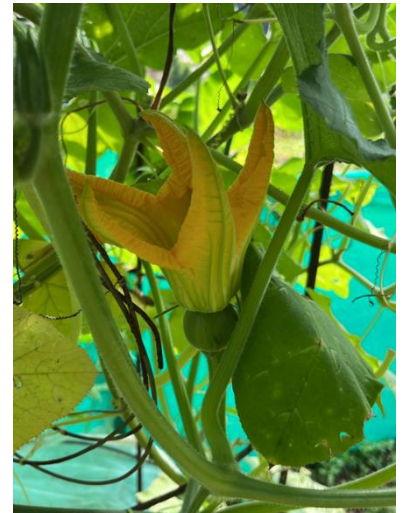


70. Churakkamathan [*Cucurbita moschata*]

- Location : Pulppally, Wayanad [Lat: 11.7923°N, Long: 76.1663°E]
- Name of farmer : Selin
- Uses: culinary
- Medicinal value: reduce blood pressure and cholesterol
- Value addition: jam, pickle
- Season of collection: July

Morphological observations

- Leaf shape : Oval-ovate
- Fruit length : 9.2 cm
- Fruit weight : 880 g
- No of seeds : 85
- No of fruits : 5



71. Neymathan [*Cucurbita moschata*]

- Location : Thondaranad, Wayanad [Lat: 11.7710° N, Long: 75.8418° E]
- Name of farmer : Shelly Philip
- Uses: culinary
- Medicinal value: reduce blood pressure and cholesterol
- Value addition: jam, powder, pickle
- Season of collection: August

Morphological observations

- Bright orange- coloured small fruits
- Leaf shape : Oval-ovate tri-lobed form
- Fruit length : 7.5 cm
- Fruit weight : 600 g
- No of seeds : 90
- No of fruits : 4



72. Mannan Mathan [*Cucurbita moschata*]

- Location : Anaviratty, Idukki (Lat: 10.014°N, Long: 76.99°E)
- Name of farmer : Latha Ayyappan
- Uses: culinary
- Medicinal value: reduce blood pressure and cholesterol
- Value addition: jam, pickle, powder

- Season of collection: November

Morphological observations

- Leaf shape : Oval-ovate tri-lobed form
- Fruit length : 28cm
- Fruit breadth : 8 cm
- Fruit weight : 110 g
- No of seeds : 31
- No of fruits : 17



Biochemical observations

- DPPH free radical scavenging activity: 33.84 %
- Total phenol content : 51.6 $\mu\text{g g}^{-1}$ FW
- Total flavonoid content : 10.22 mg GAE g^{-1}
- Vitamin C : 0.119 mg 100 g^{-1}

73. Nadan Mathan [*Cucurbita moschata*]

- Location : Valummel, Vallakadavu, Idukki [Lat: 9.60159° N, Long: 77.20604° E]
- Name of farmer : Saji
- Uses: culinary
- Medicinal value: reduce blood pressure and cholesterol
- Value addition: marmalade, jelly
- Season of collection: November

Morphological observations

- Leaf shape : Oval-ovate tri-lobed form
- Fruit length : 29.5 cm
- Fruit breadth : 18 cm
- Fruit weight : 1.3 kg
- No of seeds : 89



74. Nadan Mathan [*Cucurbita moschata*]

- Location : Attapalam, Kumily, Idukki [Lat 9.6161° N, Long 77.1582° E]
- Name of farmer : Jessy
- Uses: culinary
- Medicinal value: reduce blood pressure and cholesterol
- Value addition: powder, jam
- Season of collection: November

Morphological observations

- Leaf shape : Oval-ovate tri-lobed form
- Fruit length : 18 cm
- Fruit breadth : 6.5 cm
- Fruit weight : 1.42 kg
- No of seeds : 49
- No of fruits : 12

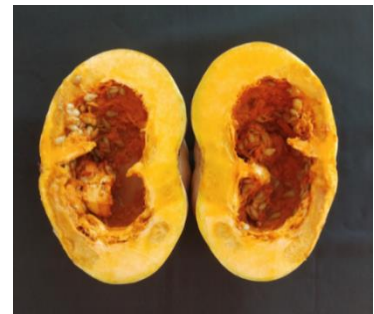


75. Nadan Mathan [*Cucurbita moschata*]

- Location : Alakkode, Thodupuzha, Idukki [Lat 9.8959° N, Long 76.7184° E]
- Name of farmer : Antony
- Uses: culinary
- Medicinal value: reduce blood pressure and cholesterol
- Value addition: jam, powder
- Season of collection: February

Morphological observations

- Fruit length : 14 cm
- Fruit breadth : 21.2 cm
- Fruit weight : 1.6 kg
- No of seeds : 78
- No of fruits : 12



76. Nadan Mathan [*Cucurbita moschata*]

- Location : Selliampara, Idukkki [Lat 9.9950° N, Long 77.0190° E]
- Name of farmer : Thomas Varkey
- Uses: culinary
- Medicinal value: reduce blood pressure and cholesterol
- Value addition: jam, powder
- Season of collection: February

Morphological observations

- Fruit length : 8.9 cm
- Fruit breadth : 16.4 cm
- Fruit weight : 785.6 kg
- No of seeds : 63



77. Nadan Mathan [*Cucurbita moschata*]

- Location : Attapalam, Kumily, Idukki [Lat 9.6161° N, Long 77.1582° E]
- Name of farmer : Jessy
- Uses: culinary
- Medicinal value: reduce blood pressure and cholesterol
- Value addition: jam, powder
- Season of collection: March

Morphological observations

- Round fruits
- Fruit length : 18.6 cm
- Fruit breadth : 17.3 cm
- Fruit weight : 1.4 kg
- No of seeds : 43

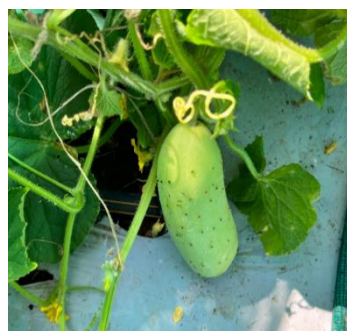


78. Mullan vellari (*Cucumis sativus*)

- Location : Paloorkavu, Idukki (Lat: 9.5371°N, Long: 76.938°E)
- Name of farmer : Jose
- Uses: culinary
- Medicinal value: reduce swelling
- Value addition: pickle, juice
- Season of collection: July

Morphological observations

- No of main branches : 2
- Leaf length : 34 cm
- Leaf breadth : 23 cm
- Fruit colour : light yellow
- Fruit length : 18.4 cm
- Fruit breadth : 7.3 cm
- Fruit weight : 1.10 kg



79. OP Melon (*Cucumis melo* var. *conomon*)

- Location : Erimayur, Palakkad (Lat: 10.6679°N, Long: 76.5424°E)
- Name of farmer : Pyarijan Naseer
- Uses: culinary
- Nutritive value: rich in anti-oxidants
- Value addition: pickle, juice, salad
- Season of collection: November

Morphological observations

- No of main branches : 3
- Fruit length : 22.3 cm
- Fruit breadth : 6.5 cm
- Fruit weight : 1.06 kg



80. Nadan vellari (*Cucumis sativus*)

- Location : Cherthala, Alappuzha [Lat: 9.6741°N, Long: 76.3401°E]
- Name of farmer : Prakasan
- Uses: culinary
- Medicinal value: reduce swelling
- Value addition: pickle, juice
- Season of collection: March

Morphological observations

- No of main branches : 2
- Leaf shape : Triangular ovate
- Leaf length : 24 cm
- Leaf breadth : 17 cm
- Fruit colour : green with yellow
- Fruit shape : Oblong
- Fruit length : 14.8 cm
- Fruit breadth : 25 cm
- Fruit weight : 0.6 kg



81. OP melon (*Cucumis melo* var. *conomon*)

- Location : Mananthavady, Wayanad [Lat: 11.806199, Long: 76.059957]
- Name of farmer : Balakrishnan
- Uses: culinary
- Medicinal value: treats jaundice, hepatitis
- Value addition: pickle
- Season of collection: June

Morphological observations

- No of main branches: 3
- Leaf shape : Ovate - oblong
- Leaf length : 16 cm
- Leaf breadth : 13 cm
- Fruit colour : green with yellow
- Fruit shape : Oval
- Fruit length : 22 cm
- Fruit breadth : 17 cm
- Fruit weight : 0.9 kg

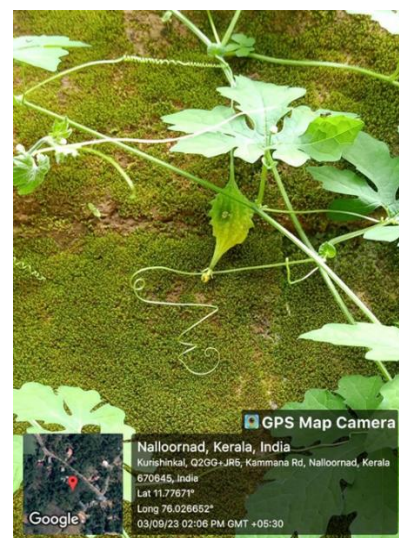


82. Kattu paval (*Momordica charantia*)

- Location : Nallornad, Wayanad (Lat:11.77692°N, Long: 76.026687°E)
- Name of farmer : Balakrishnan
- Uses: culinary, kondattam
- Medicinal value: lowers cholesterol
- Value addition: juice, pickle
- Season of collection: September

Morphological observations

- No of main branches : 2
- Leaf shape : Round with deeply lobed
- Fruit colour : green
- Fruit shape : spindle shaped
- Fruit length : 6.8 cm
- Fruit breadth : 3.2 cm
- Fruit weight : 12 g



83. Kuruttu paval (*Momordica charantia*)

- Location : Paloor kavu, Idukki (Lat: 9.537142°N, Long: 76.938652°E)
- Name of farmer : Jose
- Uses: culinary
- Medicinal value: lowers cholesterol and treats cancer
- Value addition: juice, pickle
- Season of collection: July

Morphological observations

- No of main branches : 2
- Leaf shape : Round ovate shape
- Fruit colour : dark green
- Fruit shape : spindle-shaped
- Fruit length : 4.5 cm
- Fruit breadth : 3.5 cm
- Fruit weight : 15 g



84. Nadan paval (*Momordica charantia*)

- Location: Mazhuvannor, Ernakulam (Lat: 10.01296°N, Long: 76.50794°E)
- Name of farmer: Valsa
- Uses: culinary, kondattam
- Medicinal value: lowers cholesterol
- Value addition: pickle, dried rings
- Season of collection: August

Morphological observations

- No of main branches: 3
- Leaf shape : palmately veined
- Leaf length : 17 cm
- Leaf breadth : 112 cm
- Fruit colour : dark green
- Fruit shape : oblong shaped
- Fruit length : 31 cm
- Fruit breadth : 14 cm
- Fruit weight : 109 g



85. Nadan paval (*Momordica charantia*)

- Location: Cherthala, Alappuzha [Lat: 9.6741°N, Long: 76.3401°E]
- Name of farmer: Prakasan
- Uses: culinary
- Medicinal value: lowers cholesterol
- Value addition: pickle, dried rings
- Season of collection: March

Morphological observations

- No of main branches: 2
- Leaf shape : palmately veined
- Leaf length : 16 cm
- Leaf breadth : 14.5 cm
- Fruit colour : green
- Fruit shape : oblong shaped
- Fruit length : 16.4 cm
- Fruit breadth : 4.5 cm
- Fruit weight : 40 g
- No of seeds : 40-50



86. Kattu paval (*Momordica charantia*)

- Location : Manathavady, Wayanad [Lat 11.8029° N, Long 76.0039° E]
- Name of farmer : Saleem
- Uses: culinary
- Medicinal value: lowers cholesterol
- Value addition: pickle, dried rings
- Season of collection: August

Morphological observations

- No of main branches: 2
- Leaf shape : palmately veined
- Leaf length : 11 cm
- Leaf breadth : 7.8 cm
- Fruit colour : dark green
- Fruit shape : small round oblong shaped
- Fruit length : 3.4 cm
- Fruit breadth : 2.3 cm
- Fruit weight : 12 g
- No of seeds : 20-25



87. Nadan paval (*Momordica charantia*)

- Location : Idukki, Anaviratti, Mankadavu (Lat 10.011489°N, Long 77.002165°E)
- Name of farmer : Saji
- Uses: culinary
- Medicinal value: lowers cholesterol
- Value addition: pickle, dried rings
- Season of collection: November

Morphological observations

- No of main branches : 2
- Leaf shape : palmately veined
- Leaf length : 14 cm
- Leaf breadth : 9.8 cm
- Fruit colour : dark green
- Fruit shape : oblong shaped
- Fruit length : 3.9 cm
- Fruit breadth : 1.9 cm
- Fruit weight : 15 g
- No of seeds : 17-20

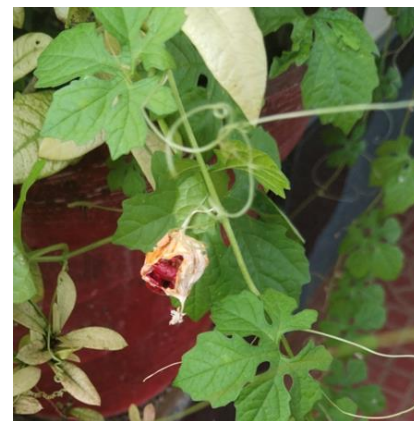


88. Rudrashapaval (*Momordica charantia*)

- Location : Pallath, Alakkode, Thodupuzha [Lat 9.8959° N, Long 76.7184° E]
- Name of farmer : Antony
- Uses: culinary
- Medicinal value: lowers cholesterol
- Value addition: pickle, dried rings
- Season of collection: February

Morphological observations

- No of main branches : 2
- Leaf shape : palmately veined
- Leaf length : 10 cm
- Leaf breadth : 6.8 cm
- Fruit colour : dark green
- Fruit shape : spindle shaped
- Fruit length : 3.2 cm
- Fruit breadth : 1.5 cm
- Fruit weight : 8 g
- No of seeds : 5- 6



89. Nadan paval (*Momordica charantia*)

- Location : Alakkode, Thodupuzha [Lat 9.8959° N, Long 76.7184° E]
- Name of farmer : Antony
- Uses: culinary
- Medicinal value: lowers cholesterol
- Value addition: juice, pickle, dried rings
- Season of collection: February

Morphological observations

- No of main branches : 2
- Leaf shape : palmately veined
- Leaf length : 8.3 cm
- Leaf breadth : 4.3 cm
- Fruit colour : light green
- Fruit shape : oblong shaped
- Fruit length : 15 cm
- Fruit breadth : 5.6 cm
- Fruit weight : 200 g
- No of seeds : 16-20



90. Nadan paval (*Momordica charantia*)

- Location : West Veliyam, Kollam [Lat 8.9416° N, Long 76.7539° E]
- Name of farmer : Prasad
- Uses: culinary
- Medicinal value: lowers cholesterol
- Value addition: pickle, dried rings
- Season of collection: March

Morphological observations

- No of main branches : 2
- Leaf shape : palmately veined
- Fruit colour : dark green
- Fruit shape : oblong shaped
- Fruit length : 13.5 cm
- Fruit breadth : 6.5 cm
- Fruit weight : 185 g
- No of seeds : 13-18



91. Nandan padavalam (*Trichosanthes cucumerina*)

- Location : Punnamchola, Malappuram (Lat: 10.898708°N, Long: 76.114223°E)
- Name of farmer : Sukoor
- Uses: culinary
- Medicinal value: treat diabetics
- Value addition: chutney, chips, dried rings
- Season of collection: August

Morphological observations

- No of main branches : 2
- Fruit colour : dark green with white stripes
- Fruit shape : cylindrical shaped
- Fruit length : 22 cm
- Fruit breadth : 4.6 cm
- Fruit weight : 540 g
- No of seeds : 25-30



92. Bottlegourd (*Lagenaria siceraria*)

- Location : Cherthala , Alappuzha [Lat 9.281839, Long 76.444228]
- Name of farmer : Prakasan
- Uses: culinary
- Medicinal value: cooling, anti-inflammatory properties
- Season of collection: August

Morphological observations

- No of main branches : 2
- Fruit colour : light green
- Fruit shape : oblong shaped
- Fruit length : 120 cm
- Fruit breadth : 6.4 cm
- Fruit weight : 1.46 kg
- No of seeds : 150-160



93. Ridge gourd (*Luffa acutangula*)

- Location: Kundamkuzhy, Kasargode (Lat: 12.4548°, Long: 75.1399°)
- Name of farmer : Chandrasekharan
- Uses: culinary
- Medicinal value: treat and prevents cold
- Value addition: chutney, dried ring
- Season of collection: September

Morphological observations

- Green, small fruits with white stripes
- Leaf shape : palmately lobed
- Fruit length : 8-9 cm
- Fruit weight : 260 g
- No of fruits : 32
- No of seeds : 50



94. Ridge gourd (*Luffa acutangula*)

- Location : Kanhirode, Kannur [Lat 11.9190 , Long 75.6479990]
- Name of farmer : Kunjikannan
- Uses: culinary
- Medicinal value: treat and prevents cold
- Value addition: pickle, dried rings
- Season of collection: March

Morphological observations

- Green, small fruits
- Leaf shape : acuminate
- Fruit length : 12 cm
- Fruit weight : 75 g
- No of fruits : 28
- No of seeds : 32



95. Ridge gourd (*Luffa acutangula*)

- Location : Chammanattu, Kuthiakode, Alappuzha [Lat 9.2818°N, Long 76.4442°E]
- Name of farmer : Prakasan
- Uses: culinary
- Medicinal value: anti inflammatory
- Value addition: pickle, dried ring
- Season of collection: February

Morphological observations

- Green, long fruits
- Fruit length : 23 cm
- Fruit weight : 105 g
- No of seeds : 43



96. Sponge gourd (*Luffa cylindrica*)

- Location : Manivayal, Wayanad [Lat 11.6009°N, Long: 76.0813°E]
- Name of farmer : Prakasan
- Uses: culinary
- Medicinal value: anti-inflammatory
- Value addition: pickle, dried ring

Morphological observations

- Green, small fruits
- Leaf shape : maple-leaf-like shape
- Fruit length : 24 cm
- Fruit weight : 350 g
- Fruit breadth : 10 cm
- No of seeds : 47



III. Accessions collected and characterized under Malvaceae family

97. Anakomban venda [*Abelmoschus esculentus* L.]

- Location : Venniyoor, Malappuram [Lat:11.0236°N, Long:75.9591°E]
- Name of farmer : Muhammed Ali
- Uses: culinary, kondattam
- Nutritive value: rich in vitamin A, B, C
- Value addition: kondattam, pickle
- Season of collection: August

Morphological observations

- Plant height : 155 cm
- Leaf shape : heart-shaped
- Fruit length : 21-24 cm
- Fruit weight : 12.5 g
- No of seeds : 35



98. Venda [*Abelmoschus esculentus* L.]

- Location : Venniyoor, Malappuram [Lat:11.0236°N, Long:75.9591°E]
- Name of farmer : Sukoor
- Uses: culinary, kondattam
- Nutritive value: rich in vitamin A, B, C
- Value addition: dried okra
- Season of collection: August

Morphological observations

- Plant height : 140 cm
- Leaf shape : elongated, heart-shaped
- Fruit length : 26 cm
- Fruit weight : 14 g
- No of seeds : 32



99. Anakombanvenda [*Abelmoschus esculentus* L.]

- Location : Nallornad, Wayanad [Lat:11.7769°N, Long;76.0266°E]
- Name of farmer : Balakrishnan
- Uses: culinary
- Medicinal value: treat urinary complications
- Value addition: dried okra
- Season of collection: September



Morphological observations

- Plant height : 76 cm
- Leaf shape : heart-shaped
- Fruit length : 17 cm
- Fruit weight : 9 g
- No of seeds : 12

100. Venda [*Abelmoschus esculentus* L.]

- Location: Peringottukurissi, Palakkad [Lat:10.7527°N, Long:76.4881°E]
- Uses: culinary
- Medicinal value: treat urinary complications
- Value addition: kondattam, pickle
- Season of collection: July

Morphological observations

- Plant height : 58 cm
- Leaf shape : heart-shaped with lobes
- Fruit length : 14 cm
- Fruit weight : 5.8 g
- No of seeds : 17



101. Nadan venda (*Abelmoschus esculentus* L.)

- Location : Periya, Kasarkode (Lat:12.4076°N, Long:75.0932°E)
- Name of farmer : Karunakaran
- Uses: culinary
- Medicinal value: reduce swelling
- Value addition: pickle, kondattam
- Season of collection: September

Morphological observations

- Plant height : 33.5 cm
- Leaf shape : broadly ovate with intermediate lobing
- Fruit length : 20 cm
- Fruit weight : 25 g
- No of fruits : 38
- No of seeds : 28



102. Nadan venda (*Abelmoschus esculentus* L.)

- Location : Periya, Kasarkode (Lat:12.4076°N, Long:75.0932°E)
- Name of farmer : Karunakaran
- Uses: culinary
- Medicinal value: treat dysentery
- Value addition: dried okra
- Season of collection: September

Morphological observations

- Plant height : 41 cm
- Leaf shape : Ovate with intermediate lobing
- Fruit length : 18 cm
- Fruit weight : 125 g
- No of fruits : 46
- No of seeds : 17



103. Nadan venda (*Abelmoschus esculentus* L.)

- Location : Vellarikund, Kasargode (Lat:12.3996°N, Long:75.2869°E)
- Name of farmer : Dolly
- Uses: culinary
- Medicinal value: treat dysentery
- Value addition: dried okra
- Season of collection: September

Morphological observations

- Plant height : 57 cm
- Leaf shape : Ovate with intermediate lobing
- Fruit length : 17 cm
- Fruit weight : 40 g
- No of fruits : 56
- No of seeds : 10



104. Maravenda (*Abelmoschus esculentus* L.)

- Location: Mattilayam, Wayanad (Lat:11.7423°N, Long:75.8519°E)
- Name of farmer: Abraham
- Uses: culinary
- Medicinal value: treat dysentery, gonorrhea
- Value addition: dried okra
- Season of collection: September

Morphological observations

- Plant height : 130 cm
- Leaf shape : Ovate with no lobing
- Fruit length : 15 cm
- Fruit weight : 27 g
- No of fruits : 38
- No of seeds : 14



105. Kasthurivenda (*Abelmoschus moschata*)

- Location : Thazhekod, Malapuram (Lat: 10.9619° N, Long: 76.3039° E)
- Name of farmer : Suhara
- Small fruits
- Uses: culinary
- Medicinal value: regulate blood pressure
- Value addition: dehydration, perfumes
- Season of collection: October

Morphological observations

- Plant height : 125 cm
- Leaf shape : Ovate
- Fruit length : 5 cm
- Fruit weight : 14 g
- No of fruits : 24
- No of seeds : 15



106. Nadanvenda (*Abelmoschus esculentus* L.)

- Location : Anaviratty, Kerala (Lat: 10.0149°N, Long: 76.9915°E)
- Name of farmer : Latha Ayyappan
- Medium sized fruits
- Uses: culinary
- Medicinal value: regulate blood pressure
- Value addition: dried okra
- Season of collection: November

Morphological observations

- Plant height : 160 cm
- Leaf shape : Finger like prominent lobing
- Fruit length : 17 cm
- Fruit weight : 24 g
- No of fruits : 32
- No of seeds : 18



III. Accessions collected and characterized under Convolvulaceae family

107. Clovebean (*Ipomoea muricata*)

- Location: Paloorkavu, Idukki (Lat:9.5371°N, Long;76.9386°E)
- Name of farmer : Jose
- Fruits having violet tinge
- Uses: culinary
- Medicinal value: treat skin ailments
- Value addition: pickle, ketchup
- Season of collection: July



Morphological observations

- No of main branches :4
- Leaf shape : Heart shaped
- Fruit length : 16 cm
- Fruit weight : 6 g
- No of seeds : 3

108. Clovebean (*Ipomoea muricata*)

- Location : Alathur, Palakkad (Lat 10.6470°N, Long 76.5378°E)
- Name of farmer : Shaila
- Uses: culinary
- Medicinal value: treat cuts and blisters
- Value addition: pickle, powder
- Season of collection: November



Morphological observations

- Green fruit colour with ovoid capsules
- Leaf shape : Heart shaped
- Fruit length : 17 cm
- Fruit weight : 5 g
- No of seeds : 4
- No of fruits : 200-225

109. Clovebean (*Ipomoea muricata*)

- Location : Nedinjal, Trivandrum [Lat 8.4182°N, Long 77.0081°E]
- Name of farmer : Aneesh
- Uses: culinary
- Medicinal value: treat burns and sun scald
- Value addition: pickle, powder
- Season of collection: January

Morphological observations

- Light green fruit colour with ovoid capsules
- Leaf shape : Heart shaped
- Fruit length : 14 cm
- Fruit weight : 4 g
- No of seeds : 2
- No of fruits : 300



110. Clovebean (*Ipomoea muricata*)

- Location : Thazhekcode, Malapuram [Lat 10.9619° N, Long 76.3039° E]
- Name of farmer : Suhara
- Uses: culinary
- Medicinal value: anti inflammatory
- Nutritive value: rich in antioxidants
- Value addition: powder, pickle
- Season of collection: November

Morphological observations

- Light green fruit colour with ovoid capsules
- Leaf shape : Heart shaped
- Fruit length : 21 cm
- Fruit weight : 7 g
- No of seeds : 3
- No of fruits : 250-275



111. Clovebean (*Ipomoea muricata*)

- Location : Vettickal, Vallakadavu, Idukki [Lat 9.60159° N, Long 77.20604° E]
- Name of farmer : Jain
- Uses: culinary
- Medicinal value: anti inflammatory
- Nutritive value: rich in antioxidants
- Value addition: powder, pickle
- Season of collection: November

Morphological observations

- Light green fruit colour with ovoid capsules
- Leaf shape : Heart shaped
- Fruit length : 15 cm
- Fruit weight : 6 g
- No of seeds : 3-4
- No of fruits : 150-200



V. Accessions collected and characterized under Fabaceae family

112. Winged bean (*Psophocarpus tetragonolobus*)

- Location : Venkulam, Trivandrum [Lat 8.3194°N, Long 77.1140°E]
- Name of farmer : Rajamony
- Uses: culinary
- Medicinal value: treat obesity
- Value addition: pickle
- Season of collection: January

Morphological observations

- Light green fruit colour
- Leaf shape : ovate
- Fruit length : 9 cm
- Fruit weight : 5.5 g
- No of seeds : 6



113. Winged bean (*Psophocarpus tetragonolobus*)

- Location : Kallor, Selliampara, Vellathooval [Lat 9.9950° N, Long 77.0190° E]
- Name of farmer : Rojan George
- Uses: culinary
- Medicinal value: anti inflammatory
- Value addition: pickle
- Season of collection: January

Morphological observations

- Light green fruit colour
- Leaf shape : ovate-lanceolate
- Fruit length : 15 cm
- Fruit weight : 7.3 g
- No of seeds : 5-6



114. Winged bean (*Psophocarpus tetragonolobus*)

- Location : Pallath, Alakkode, Thodupuzha [Lat 9.8959° N, Long 76.7184° E]
- Name of farmer : Antony
- Uses: culinary
- Medicinal value: anti inflammatory
- Value addition: pickle
- Season of collection: February

Morphological observations

- Purple fruit colour
- Leaf shape : ovate-lanceolate
- Fruit length : 9 cm
- Fruit weight : 8.5 g
- No of seeds : 4-5



115. Winged bean (*Psophocarpus tetragonolobus*)

- Location : Kunnappalli, Adichil [Lat 10.5303° N , Long 76.2147° E]
- Name of farmer : Aisal Kochumon
- Uses: culinary
- Medicinal value: anti inflammatory
- Value addition: pickle
- Season of collection: March

Morphological observations

- Green, long fruit
- Leaf shape : ovate-lanceolate
- Fruit length : 32 cm
- Fruit weight : 10.2 g
- No of seeds : 10-12
- No of fruits : 100-150

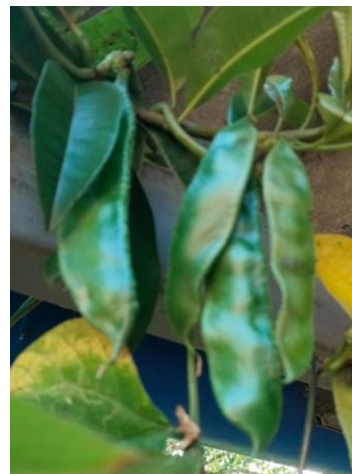


116. Dolichos bean (*Lab lab purpureus*)

- Location : Glenmary, Vandiperiyar, Idukki [Lat 9.5721° N, Long 77.0896° E]
- Name of farmer : Thampidas
- Uses: culinary
- Nutritive value: rich in antioxidants
- Value addition: baked products
- Season of collection: November

Morphological observations

- Green, medium sized fruit
- Leaf shape : trifoliate, ovate shaped
- Fruit length : 15 cm
- Fruit weight : 7.4 g
- No of seeds : 5-6



117. Cowpea (*Vigna unguiculata*)

- Location : Vellathooval, Idukki [Lat 9.9788° N, Long 77.0248° E]
- Name of farmer : Seleena
- Uses: culinary
- Medicinal value: anti- inflammatory, anti- diabetic
- Value addition: soup
- Season of collection: January

Morphological observations

- Light purple, medium sized fruit
- Leaf shape : trifoliate shaped
- Fruit length : 17 cm
- Fruit weight : 12 g
- No of seeds : 12-15

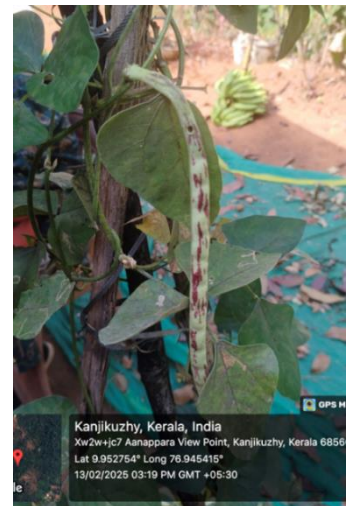


118. Cowpea (*Vigna unguiculata*)

- Location : Cheelachuvadu, Idukki [Lat 9.9182° N, Long 76.9621° E]
- Name of farmer : Sebastin
- Uses: culinary
- Medicinal value: anti- inflammatory, anti- diabetic
- Value addition: soup
- Season of collection: January

Morphological observations

- Green fruits with purple stripes
- Leaf shape : trifoliate shaped
- Fruit length : 12 cm
- Fruit weight : 7 g
- No of seeds : 7-8



VI. Accessions of different crops collected and characterized based on farmers description.

119. Neykumbalam [*Benincasa hispida*]

- Location: Varavoor, Thrissur (Lat:10.7204°N, Long:76.2253°E)
- Name of farmer: Reshmi Shaji
- Uses: culinary
- Medicinal value: digestive and cooling properties
- Season of collection: July

- Value addition: jam, rasayana
- Big fruits

120. Nadan kumbalam [*Benincasa hispida*]

- Location: Mazhuvannoor, Ernakulam (Lat:10.01296°N, Long:76.50794°E)
- Name of farmer: Valsa
- Uses: culinary
- Medicinal value: treat fever, kidney diseases
- Season of collection: August
- Value addition: jam, pickle, dried slices
- Big fruits

121. Nadan kumbalam [*Benincasa hispida*]

- Location: Parakkadav, Ernakulam (Lat:10.1975°N, Long:76.3469°E)
- Name of farmer: Polachan
- Uses: culinary
- Medicinal value: treat neurological diseases
- Season of collection: August
- Value addition: jam, pickle, dried slices
- Big fruits with less seeds

122. Neykumbalam [*Benincasa hispida*]

- Location: Vellarikund, Kasargode (Lat:12.3996°N, Long:75.2869°E)
- Name of farmer: Dolly
- Uses: culinary
- Medicinal value: treat neurological diseases
- Season of collection: September
- Value addition: jam, petha
- Small sized fruits

123. Neykumbalam [*Benincasa hispida*]

- Location: Mattilayam, Wayanad (Lat:11.7423°N, Long:75.8519°E)
- Name of farmer: Abraham
- Uses: culinary
- Medicinal value: treat kidney diseases and fever
- Season of collection: September
- Value addition: jam, petha
- Small fruits, high yield

124. Nadan kumbalam [*Benincasa hispida*]

- Location: Alathur, Palakkad (Lat 10.6470°N, Long 76.5378°E)
- Name of farmer: Shaila
- Uses: culinary
- Medicinal value: treat cough and fever
- Season of collection: November
- Value addition: jam, pickle, dried slice
- Fruits: 10-13 kg

125. Nadan kumbalam [*Benincasa hispida*]

- Location: Alathur, Palakkad (Lat 10.6502°N, Long 76.5521°E)
- Name of farmer: Krishnakumar
- Uses: culinary
- Medicinal value: treat kidney diseases, fever
- Season of collection: November
- Value addition: jam, pickle, dried slice
- Fruits are bigger

126. Kumbalam [*Benincasa hispida*]

- Location: Harippad, Alappuzha [Lat: 9.281839°N, Long: 76.444228°E]
- Name of farmer: Vani prakithi
- Uses: culinary
- Medicinal value: treat fever
- Season of collection: January
- Value addition: pickle, jam, dried slice
- Larger fruits

127. Neykumbalam [*Benincasa hispida*]

- Location: Pulppally, Wayanad [Lat 11.7923°N, Long 76.1663°E]
- Name of farmer: Selin
- Uses: culinary
- Medicinal value: treat kidney diseases and fever
- Season of collection: March
- Value addition: jam, petha
- Small fruits

128. Valiya kumbalam [*Benincasa hispida*]

- Location: Pulppally, Wayanad [Lat 11.7923°N, Long 76.1663°E]
- Name of farmer: Selin
- Uses: culinary
- Medicinal value: treat kidney diseases and fever
- Season of collection: March
- Value addition: pickle, jam, dried slice
- Large fruits

129. Kumbalam [*Benincasa hispida*]

- Location: Mananthavadi, Wayanad [Lat 11.806199°N, Long 76.059957°E]
- Name of farmer: Jose
- Uses: culinary
- Medicinal value: laxative and diuretic
- Season of collection: March
- Value addition: jam, pickle, dried slice, halwa, candy
- More number of fruits

130. Neykumbalam [*Benincasa hispida*]

- Location: Karshakamithram, Trivandrum (Lat-8.54°N, Long- 77.17°E)
- Name of farmer: Rajamony
- Uses: culinary
- Medicinal value: treat kidney diseases and fever
- Season of collection: July
- Value addition: rasayana, jam
- Small fruits

131. Neykumbalam [*Benincasa hispida*]

- Location: Thondaranad, Wayanad (Lat: 11.7710°N, Long: 75.8418°E)
- Name of farmer: Shelly Philip
- Uses: culinary
- Medicinal value: treat kidney diseases and fever
- Season of collection: August
- Value addition: rasayana, jam
- Small fruits

132. Neykumbalam [*Benincasa hispida*]

- Location: Thondaranad, Wayanad (Lat: 11.7710°N, Long: 75.8418°E)
- Name of farmer: Shelly Philip
- Uses: culinary
- Medicinal value: treat kidney diseases and fever
- Season of collection: July
- Value addition: jam, rasayana
- Small fruits

133. Sunami kumbalam [*Benincasa hispida*]

- Location: Elathur, Kozhikode (Lat: 11.3270°N, Long: 75.7449°E)
- Name of farmer: Rajamohanan Pilla
- Uses: culinary
- Medicinal value: treat kidney diseases and fever
- Season of collection: September
- Value addition: pickle, jam
- Medium sized fruits

134. Neykumbalam [*Benincasa hispida*]

- Location: Elathur, Kozhikode (Lat: 11.3270°N, Long: 75.7449°E)
- Name of farmer: Rajamohanan Pilla
- Uses: culinary
- Medicinal value: anti-inflammatory
- Season of collection: July
- Value addition: petha, rasayana
- Small fruits

135. Neykumbalam [*Benincasa hispida*]

- Location: Kurumathur, Kannur (Lat: 12.0443°N, Long: 75.3862°E)
- Name of farmer: Sajeesh P. P
- Uses: culinary
- Medicinal value: treat kidney diseases and fever
- Season of collection: October
- Value addition: jam, rasayana
- Small fruits

136. Neykumbalam [*Benincasa hispida*]

- Location: Thazhekode, Malappuram (Lat: 10.9619°N, Long: 76.3039°E)
- Name of farmer: Suhara
- Uses: culinary
- Medicinal value: treat kidney diseases and fever
- Season of collection: October
- Value addition: jam, rasayana
- Small fruits

137. Kumbalam [*Benincasa hispida*]

- Location: Thazhekode, Malappuram (Lat: 10.9619°N, Long: 76.3039°E)
- Name of farmer: Suhara
- Uses: culinary
- Medicinal value: treat kidney diseases and fever
- Season of collection: October
- Value addition: pickle, jam, jelly, candy
- Medium sized fruits

138. Valiya kumbalam [*Benincasa hispida*]

- Location: Thazhekode, Malappuram (Lat: 10.9619°N, Long: 76.3039°E)
- Name of farmer: Suhara
- Uses: culinary
- Medicinal value: treat kidney diseases and fever
- Season of collection: October
- Value addition: pickle, candy, jam
- Large sized fruits

139. Nadan kumbalam [*Benincasa hispida*]

- Location: Thodupuzha, Idukki (Lat: 9.8959°N, Long: 76.7184°E)
- Name of farmer: Antony
- Uses: culinary
- Medicinal value: treat and prevent cold
- Season of collection: November
- Value addition: pickle, candy, jam
- Large fruits

140. Nadan kumbalam [*Benincasa hispida*]

- Location: Vellathooval, Idukki (Lat: 9.9788°N, Long: 77.0248°E)
- Name of farmer: Jhonson
- Uses: culinary
- Medicinal value: anti-inflammatory
- Season of collection: February
- Value addition: jam, jelly, pickle, candy
- Medium sized fruits

141. Neykumbalam [*Benincasa hispida*]

- Location: Thodupuzha, Idukki (Lat: 9.8959°N, Long: 76.7184°E)
- Name of farmer: Antony
- Uses: culinary
- Medicinal value: anti-inflammatory
- Season of collection: February
- Value addition: jam, rasayana, petha

142. Nadan kumbalam [*Benincasa hispida*]

- Location: Kumily, Idukki (Lat: 9.6037°N, Long: 77.1675°E)
- Name of farmer: Jessy
- Uses: culinary
- Medicinal value: anti-inflammatory
- Season of collection: February
- Value addition: juice, pickle, jelly
- Long fruits

143. Nadan kumbalam [*Benincasa hispida*]

- Location: Sellliyampara, Idukki (Lat: 9.9950°N, Long: 77.0190°E)
- Name of farmer: Thomas Varkey
- Uses: culinary
- Medicinal value: anti-inflammatory
- Season of collection: February
- Value addition: juice, jam, pickle
- Big fruits

144. Neykumbalam [*Benincasa hispida*]

- Location: Poovarani, Kottayam (Lat: 9.6663°N, Long: 76.7134°E)
- Name of farmer: Vakkachan
- Uses: culinary
- Medicinal value: anti-inflammatory
- Season of collection: February
- Value addition: juice, rasayana
- Small fruits

145. Nadan kumbalam [*Benincasa hispida*]

- Location: Kuthiakode, Alappuzha (Lat: 9.7934°N, Long: 76.3160°E)
- Name of farmer: Prakashan
- Uses: culinary
- Medicinal value: anti-inflammatory
- Season of collection: March
- Value addition: juice, jam, pickle, candy
- Medium sized fruits

146. Neykumbalam [*Benincasa hispida*]

- Location: Adichil, Thrissur (Lat: 10.52°N, Long: 76.21°E)
- Name of farmer: Aisal Kochumon
- Uses: culinary
- Medicinal value: anti-inflammatory, anti-diabetic
- Season of collection: March
- Value addition: rasayana, jam

147. Neykumbalam [*Benincasa hispida*]

- Location: Chalakkudy, Thrissur (Lat: 10.3070°N, Long: 76.3341°E)
- Name of farmer: Suresh
- Uses: culinary
- Medicinal value: anti-inflammatory
- Season of collection: February
- Value addition: rasayana, jam
- Small fruits

148. Nadan kumbalam [*Benincasa hispida*]

- Location: Kottanad, Pathanamthitta (Lat: 9.4010°N, Long: 76.7423°E)
- Name of farmer: Nandakumar
- Uses: culinary

- Medicinal value: anti-inflammatory
- Season of collection: March
- Value addition: juice, pickle, jam
- Medium sized fruits

149. Nadan kumbalam [*Benincasa hispida*]

- Location: Ezhumattur, Pathanamthitta (Lat: 9.4212°N, Long: 76.7019°E)
- Name of farmer: Thomas John
- Uses: culinary
- Medicinal value: anti-inflammatory
- Season of collection: March
- Value addition: juice, pickle, jam
- Medium sized fruits

150. Bhindi [*Abelmoschus esculentus*]

- Location: Wayanad (Lat: 11.6994°N, Long: 76.0773°E)
- Name of farmer: Sooraj
- Uses: culinary
- Medicinal value: regulate blood pressure
- Season of collection: June
- Value addition: kondattam, pickle
- High yielding

151. Anakomban venda [*Abelmoschus esculentus*]

- Location: Perambra, Kozhikode (Lat: 11.5903°N, Long: 75.6656°E)
- Name of farmer: Ajitha
- Uses: culinary
- Medicinal value: regulate blood pressure
- Season of collection: October
- Value addition: kondattam, pickle
- Long fruits

152. Orumuzham venda [*Abelmoschus esculentus*]-

- Location: Kurumathur, Kannur (Lat: 12.0443°, Long: 75.3862°)
- Name of farmer: Sajeesh P. P
- Uses: culinary
- Medicinal value: regulate blood pressure
- Season of collection: October
- Value addition: pickle, dried okra

- Medium sized fruits

153. Pulivenda [*Hibiscus sabdariffa*]

- Location: Thazhekod, Malappuram (Lat: 10.9619°N, Long: 76.3039°E)
- Name of farmer: Suhara
- Uses: culinary
- Medicinal value: regulate blood pressure
- Season of collection: October
- Value addition: chutney, beverage
- Red fruits with sour taste

154. Bhindi [*Abelmoschus esculentus*]

- Location: Kappumthala, Kottayam (Lat: 9.765914°N, Long: 76.526738°E)
- Name of farmer: Thomas Philip
- Uses: culinary
- Medicinal value: regulate blood pressure
- Season of collection: November
- Value addition: pickle, dried okra
- Long fruits

155. Nadan venda [*Abelmoschus esculentus*]

- Location: Wadakkanchery, Palakkad (Lat: 10.6644°N, Long: 76.2493°E)
- Uses: culinary
- Medicinal value: treat urinary complications
- Season of collection: July
- Value addition: pickle, dried okra

156. Orumuzham venda [*Abelmoschus esculentus*]

- Location: Thodupuzha, Idukki (Lat: 9.8959°N, Long: 76.7184°E)
- Name of farmer: Antony
- Uses: culinary
- Medicinal value: regulate blood pressure
- Season of collection: November
- Value addition: pickle, dried okra
- Medium light green pods

157. Nadan venda [*Abelmoschus esculentus*]

- Location: Thodupuzha, Idukki (Lat: 9.8959°N, Long: 76.7184°E)
- Name of farmer: Antony
- Uses: culinary
- Medicinal value: regulate blood pressure
- Season of collection: November
- Value addition: pickle, dried okra
- Medium sized fruits

158. Nadan venda [*Abelmoschus esculentus*]

- Location: Vallakkadav, Idukki (Lat: 9.5365°N, Long: 77.1046°E)
- Name of farmer: Greeshma
- Uses: culinary
- Medicinal value: regulate blood pressure
- Season of collection: November
- Value addition: pickle, dried okra
- Medium sized pods

159. Nadan venda [*Abelmoschus esculentus*]

- Location: Cheelachuvadu, Idukki (Lat: 9.9182°N, Long: 76.9621°E)
- Name of farmer: Sebastain
- Uses: culinary
- Medicinal value: regulate blood pressure
- Season of collection: November
- Value addition: pickle, dried okra
- Medium sized pods

160. Kasthuri venda [*Abelmoschus moschatus*]

- Location: Thodupuzha, Idukki (Lat: 9.8959°N, Long: 76.7184°E)
- Name of farmer: Antony
- Uses: culinary
- Medicinal value: regulate blood pressure
- Season of collection: February
- Value addition: cosmetics, perfumes
- Small sized pods

161. Nadan venda [*Abelmoschus esculentus*]

- Location: Thodupuzha, Idukki (Lat: 9.8959°N, Long: 76.7184°E)
- Name of farmer: Antony
- Uses: culinary
- Medicinal value: regulate blood pressure
- Season of collection: February
- Value addition: pickle, dried okra
- Medium sized pods

162. Kala komban venda [*Abelmoschus esculentus*]

- Location: Vengeri, Kozhikode (Lat; 11.3045°N, Long;75.7967°E)
- Name of farmer: Devadsan
- Uses: culinary
- Medicinal value: regulate blood pressure
- Season of collection: February
- Value addition: pickle, dried okra
- Big fruits

163. Mara venda [*Abelmoschus esculentus*]

- Location: Ayira, Trivandrum (Lat: 8.3358°N, Long: 77.1341°E)
- Uses: culinary
- Medicinal value: regulate blood pressure
- Season of collection: March
- Value addition: pickle, dried okra
- Thick fruits

164. Anakomban venda [*Abelmoschus esculentus*]

- Location: Ayira, Trivandrum (Lat: 8.3358°N, Long: 77.1341°E)
- Uses: culinary
- Medicinal value: regulate blood pressure
- Season of collection: March
- Value addition: pickle, dried okra
- Long fruits

165. Kasthuri venda [*Abelmoschus moschatus*]

- Location: Ayira, Trivandrum (Lat; 8.3358°N, Long;77.1341°E)
- Uses: culinary
- Medicinal value: regulate blood pressure
- Season of collection: March

- Value addition: cosmetics, perfumes
- Small violet fruits

166. Anakomban venda [*Abelmoschus esculentus*]

- Location: Adichil, Thrissur (Lat; 10.5304°N, Long;76.2147°E)
- Name of farmer: Aisal Kochumon
- Uses: culinary
- Medicinal value: regulate blood pressure
- Season of collection: March
- Value addition: pickle, dried okra
- Long fruits

167. Nadan venda [*Abelmoschus esculentus*]

- Location: Adichil, Thrissur (Lat; 10.5304°N, Long;76.2147°E)
- Name of farmer: Aisal Kochumon
- Uses: culinary
- Medicinal value: regulate blood pressure
- Season of collection: March
- Value addition: pickle, dried okra
- Long fruits

168. Mara venda [*Abelmoschus esculentus*]

- Location: Wayanad (Lat; 11.6994°N, Long;76.0773°E)
- Name of farmer: Manuel
- Uses: culinary
- Medicinal value: regulate blood pressure
- Season of collection: March
- Value addition: pickle, dried okra
- Thick fruits

169. Nadan venda [*Abelmoschus esculentus*]

- Location: Parakkadav, Ernakulam (Lat:10.1975°N, ELong:76.3469°)
- Name of farmer: Polachan
- Uses: culinary
- Medicinal value: treat gonorrhea, dysentery
- Season of collection: August
- Value addition: pickle, dried okra
- Long fruits

170. Anakomban venda [*Abelmoschus esculentus*]

- Location: Vellarikund, Kasargode (Lat:12.3996°N, Long:75.2869°E)
- Name of farmer: Dolly
- Uses: culinary
- Medicinal value: treat dysentery
- Season of collection: September
- Value addition: pickle, dried okra
- 35 cm long fruits

171. Anakomban venda [*Abelmoschus esculentus*]

- Location: Kozhikode (Lat: 11.2588°N, Long: 75.7804°E)
- Name of farmer: Harikrishnan
- Uses: culinary
- Medicinal value: treat dysentery
- Season of collection: September
- Value addition: pickle, dried okra
- Fruits: more length and girth

172. Nadan venda [*Abelmoschus esculentus*]

- Location: Erimayur, Palakkad (Lat 10.6679°N, Long 76.5424°E)
- Name of farmer: Pyarijan Naseer
- Uses: culinary
- Medicinal value: treat gonorrhea, dysentery
- Season of collection: November
- Value addition: pickle, dried okra
- 35 cm long fruits

173. Angila venda [*Abelmoschus esculentus*]

- Location: Alathur, Palakkad (Lat 10.6472°N, Long 76.5375°E)
- Name of farmer: Indira
- Uses: culinary
- Medicinal value: treat gonorrhea, dysentery
- Season of collection: November
- Value addition: pickle, dried okra
- Long and big fruits

174. Red venda [*Abelmoschus esculentus*]

- Location: Kavasseri, Palakkad (Lat 10.6551°N, Long 76.5293°E)
- Uses: culinary
- Medicinal value: treat gonorrhea, dysentery
- Season of collection: November
- Value addition: pickle, dried okra
- Long and big fruits

175. Mara venda [*Abelmoschus esculentus*]

- Location: Nedumangad, Trivandrum [Lat 8.649065, Long 77.101556]
- Name of farmer: Sajan
- Uses: culinary
- Medicinal value: treat gonorrhea, dysentery
- Season of collection: January
- Value addition: pickle, dried okra

176. Venda [*Abelmoschus esculentus*]

- Location: Cherthala, Alappuzha [Lat 9.6741°N, Long 76.3401°E]
- Name of farmer: Prakashan
- Uses: culinary
- Medicinal value: treat gonorrhea, dysentery
- Season of collection: March
- Value addition: pickle, dried okra

177. Kasthuri venda [*Abelmoschus esculentus*]

- Location: Kanhirode, Kannur [Lat 11.9190°N, Long 75.6479990°E]
- Name of farmer: Shinjith
- Uses: culinary
- Medicinal value: treat gonorrhea, dysentery
- Season of collection: March
- Value addition: perfumes, cosmetics
- Small fruits

178. Venda [*Abelmoschus esculentus*]

- Location: Chunda, Kannur [Lat 12.2815°N, Long 75.4023°E]
- Name of farmer: Kunjikannan
- Uses: culinary
- Medicinal value: treat gonorrhea, dysentery
- Season of collection: March

- Value addition: pickle, kondattam
- Large and slender fruits

179. Venda [*Abelmoschus esculentus*]

- Location: Erikkulam, Kasargode [Lat-12.3025°N, Long 75.1537°E]
- Name of farmer: Kelu
- Uses: culinary
- Medicinal value: treat gonorrhoea, dysentery
- Season of collection: March
- Value addition: pickle, kondattam
- Large and slender fruits

180.Venda [*Abelmoschus esculentus*]

- Location: Wayanad (Lat: 11.6994°N, Long: 76.0773°E)
- Name of farmer: Sooraj
- Uses: culinary
- Medicinal value: treat gonorrhoea, dysentery
- Season of collection: March
- Value addition: pickle, kondattam

181. Venda [*Abelmoschus esculentus*]

- Location: Wayanad (Lat: 11.6994°N, Long: 76.0773°E)
- Name of farmer: Sooraj
- Uses: culinary
- Medicinal value: treat gonorrhoea, dysentery
- Season of collection: March
- Value addition: pickle, kondattam
- Heart shaped leaves

182. Kuruttupaval [*Momordica charantia*]

- Location: Paloorkkavu, Idukki [Lat 9.5373°N, Long 76.9386°E]
- Name of farmer: Jose
- Uses: culinary
- Medicinal value: lowers cholesterol
- Season of collection: January
- Value addition: pickle, dried rings, juice

183. Neypaval [*Momordica charantia*]

- Location: Nedumangad, Trivandrum [Lat 8.6490°N, Long 77.1015°E]
- Name of farmer: Sajan
- Uses: culinary
- Medicinal value: treat cholera
- Season of collection: January
- Value addition: pickle, dried rings, powder

184. Kattupaval [*Momordica charantia*]

- Location: Wayanad (Lat; 11.6994°N, Long;76.0773°E)
- Name of farmer: Sooraj
- Uses: culinary
- Medicinal value: lowers cholesterol
- Season of collection: September
- Value addition: pickle, dried rings, chutney
- Small fruits

185. Rudraksha paval [*Momordica charantia*]

- Location: Thazhekode, Malappuram (Lat; 10.9619°N, Long;76.3039°E)
- Name of farmer: Suhara
- Uses: culinary
- Medicinal value: lowers cholesterol
- Season of collection: October
- Value addition: pickle, dried rings
- Small sized fruits

186. Paval [*Momordica charantia*]

- Location: Neezhoor, Kottayam (lat 9.715432°N, long 76.475468°E)
- Name of farmer: Mathew
- Uses: culinary
- Medicinal value: lowers cholesterol
- Season of collection: November
- Value addition: pickle, dried rings, juice
- Medium green fruits

187. Rudraksha paval [*Momordica charantia*]

- Location: Chelachuvadu, Idukki (Lat; 9.9182°N, Long;76.9621°E)
- Name of farmer: Sebastain
- Uses: culinary

- Medicinal value: lowers cholesterol
- Season of collection: November
- Value addition: pickle, dried rings
- Small sized fruits

188. Kattupaval [*Momordica charantia*]

- Location: Vellathooval, Idukki (Lat; 9.9788°N, Long;77.0248°E)
- Name of farmer: Seleena
- Uses: culinary
- Medicinal value: lowers cholesterol
- Season of collection: November
- Value addition: pickle, dried rings
- Small sized fruits

189. Sugar pavakka [*Momordica charantia*]

- Location: Poochapra, Idukki (Lat; 9.8306°N, Long;76.8416°E)
- Name of farmer: Usha
- Uses: culinary
- Medicinal value: lowers cholesterol
- Season of collection: November
- Value addition: pickle, dried rings, juice
- Small sized fruits

190. Kattupaval [*Momordica charantia*]

- Location: Vallakkadavu, Idukki (Lat; 9.5365°N, Long;77.1046°E)
- Name of farmer: Saji
- Uses: culinary
- Medicinal value: lowers cholesterol
- Season of collection: November
- Value addition: pickle, dried rings, juice
- Small sized fruits

191. Nadan paval [*Momordica charantia*]

- Location: Vallakkadavu, Idukki (Lat; 9.5365°N, Long;77.1046°E)
- Name of farmer: Kiran
- Uses: culinary
- Medicinal value: lowers cholesterol
- Season of collection: November
- Value addition: pickle, dried rings, juice

- Small sized fruits

192. Sugarpaval [*Momordica charantia*]

- Location: Kumily, Idukki (Lat; 9.6037°N, Long;77.1675°E)
- Name of farmer: Jessy
- Uses: culinary
- Medicinal value: lowers cholesterol
- Season of collection: November
- Value addition: pickle, dried rings
- Small sized fruits

193. Kattupaval [*Momordica charantia*]

- Location: Vellathooval, Idukki(Lat; 9.9788°N, Long;77.0248E)
- Name of farmer: Jhonson
- Uses: culinary
- Medicinal value: lowers cholesterol
- Season of collection: January
- Value addition: pickle, dried rings
- Small sized fruits

194. Kuttathipaval [*Momordica charantia*]

- Location: Ayira, Trivandrum (Lat; 8.3358°N, Long;77.1341°E)
- Uses: culinary
- Medicinal value: lowers cholesterol
- Season of collection: March
- Value addition: juice, pickle, kondattam
- Small sized fruits

195. Black night shade [*Solanum nigrum*]

- Location: Elathur, Kozhikode [Lat; 11.3270°N, Long; 75.7449°E]
- Name of farmer: Rajamohanan Pilla
- Uses: culinary
- Medicinal value: anti-inflammatory
- Season of collection: September
- Value addition: juice, smoothey, bread

196. Black night shade [*Solanum nigrum*]

- Location: Anaviratty, Idukki [Lat 10.0149°N, Long 76.9915°E]
- Name of farmer: Latha Aiyappan
- Uses: culinary
- Medicinal value: anti-inflammatory
- Season of collection: November
- Value addition: pickle

197. Bottlegourd [*Lagenaria siceraria*]

- Location: Palookavu, Idukki (Lat:9.5371°N, Long;76.9386°E)
- Name of farmer: Jose
- Uses: culinary
- Medicinal value: lower cholesterol
- Season of collection: July
- Value addition: jam, pickle, juice, halwa
- Round fruits

198. Bottlegourd [*Lagenaria siceraria*]

- Location: Harippad, Alappuzha [Lat 9.2818°N, Long 76.4442°E]
- Name of farmer: Vani Prakithi
- Uses: culinary
- Medicinal value: treat jaundice, diabetes
- Season of collection: January
- Value addition: jam, pickle, juice, halwa

199. Bottlegourd [*Lagenaria siceraria*]

- Location: Mananthavadi, Wayanad [Lat 11.8061°N, Long 76.0599°E]
- Name of farmer: Jose
- Uses: culinary
- Medicinal value: treat diabetes, hypertension
- Season of collection: June
- Value addition: halwa, laddoo, pickle

200. Bottlegourd [*Lagenaria siceraria*]

- Location: Parakkadavu, Ernakulam (Lat:10.1975°N, Long:76.3469°E)
- Name of farmer: Polachan
- Uses: culinary
- Nutritive value: rich in antioxidants
- Season of collection: September

- Value addition: jam, halwa, pickle
- Tender and stringless fruits

201. Bottlegourd [*Lagenaria siceraria*]

- Location: Thazhekode, Malappuram (Lat: 10.9619°N, Long: 76.3039°E)
- Name of farmer: Suhara
- Uses: culinary
- Nutritive value: rich in antioxidants
- Season of collection: October
- Value addition: pickle, jam, laddoo
- Large sized

202. Bottlegourd [*Lagenaria siceraria*]

- Location: Karunagappally, Kollam (Lat; 9.0598°N, Long;76.5356°E)
- Name of farmer: Asokan
- Uses: culinary
- Medicinal value: treat kidney diseases and fever
- Season of collection: February
- Value addition: jam, burfi, laddoo
- Round fruits

203. Bottlegourd [*Lagenaria siceraria*]

- Location: Kottanad, Pathanamthitta (Lat; 9.4010°N, Long;76.7423°E)
- Name of farmer: Nandakumar
- Uses: culinary
- Nutritive value: rich in antioxidants
- Medicinal value: anti-inflammatory
- Season of collection: March
- Value addition: juice, jam, pickle, laddoo
- Medium sized fruits

204. Cherry tomato [*Solanum lycopersicum*]

- Location: Wayanad (Lat; 11.6994°N, Long;76.0773°E)
- Name of farmer: Sooraj
- Uses: culinary
- Medicinal value: treats burns and scald
- Season of collection: March
- Value addition: pickle, chutney, sauce
- Red small fruits



205. Chilli [*Capsicum sp.*]

- Location: Vagamon, Idukki (Lat: 9.4153°N, Long: 76.5437°E)
- Uses: culinary, kondattam
- Medicinal value: treats rheumatism
- Season of collection: July
- Value addition: pickle, dehydrated chilli powder, sauce

206. Nadan mulak [*Capsicum frutescence*]

- Location: Erimayur, Palakkad (Lat.10.6679°N, Long 76.5424°E)
- Name of farmer: Pyarijan Naseer
- Uses: culinary, kondattam
- Medicinal value: treats cough and tooth ache
- Season of collection: November
- Value addition: pickle, dehydrated chilli powder

207. Nadaan pacha mulak [*Capsicum frutescence*]

- Location: Paloorkkavy, Idukki [Lat 9.5373°N, Long 76.9386°E]
- Name of farmer: Jose
- Uses: culinary
- Medicinal value: treats cough and tooth ache
- Season of collection: January
- Value addition: pickle, dehydrated chilli powder
- Pungent fruits

208. Odongoli mulak [*Capsicum frutescence*]

- Location: Nedumangad, Trivandrum [Lat 8.6490°N, Long 77.1015°E]
- Name of farmer: Sajan
- Uses: culinary
- Medicinal value: treats cough and tooth ache
- Season of collection: January
- Value addition: pickle, dehydrated chilli powder, sauce
- More spicy fruits

209. Arikanthari mulak [*Capsicum frutescence*]

- Location: Kanhirode, Kannur [Lat 11.9190°N , Long 75.6479990°E]
- Name of farmer: Shinjith
- Uses: culinary
- Medicinal value: treats cough and tooth ache
- Season of collection: March
- Value addition: pickle, dehydrated chilli powder, sauce
- Red coloured fruits

210. Vella kanthari [*Capsicum frutescence*]

- Location: Sulthanbathery, Wayanad [Lat 11.6801°N, Long 76.3614°E]
- Uses: culinary
- Medicinal value: treats cancer
- Season of collection: June
- Value addition: pickle, dehydrated chilli powder

211. Violet kanthari [*Capsicum frutescence*]

- Location: Sulthanbathery, Wayanad [Lat 11.6801°N, Long 76.3614°E]
- Name of farmer: Raju
- Uses: culinary
- Medicinal value: treats cough and tooth ache

- Season of collection: June
- Value addition: pickle, sauce, chilli powder

212. Kanthari mulak [*Capsicum frutescence*]

- Location: Thondaranad, Wayanad [Lat: 11.7710°N, Long: 75.8418°E]
- Name of farmer: Shelly Philip
- Uses: culinary
- Medicinal value: treats cough and head ache
- Sea
- son of collection: August
- Value addition: pickle, juice, chutney
- Small green fruits

213. Piriyan mulak [*Capsicum frutescence*]

- Location: Thondaranad, Wayanad [Lat: 11.7710°N, Long: 75.8418°E]
- Name of farmer: Shelly Philip
- Uses: culinary
- Medicinal value: treats cough and head ache
- Season of collection: August
- Value addition: pickle, chilli powder, chilli flakes
- Highly pungent fruits

214. Gudalur mulak [*Capsicum frutescence*]

- Location: Elathur, Kozhikode (Lat: 11.3270°N, Long: 75.7449°E)
- Name of farmer: Rajamohanan pilla
- Uses: culinary
- Medicinal value: treats cough and headache
- Season of collection: September
- Value addition: pickle, chilli powder, chilli flakes
- Round green fruits

215. Manja mulak [*Capsicum frutescence*]

- Location: Thazhekode, Malappuram (Lat: 10.9619°N, Long: 76.3039°E)
- Name of farmer: Suhara
- Uses: culinary
- Medicinal value: treats cough and head ache
- Season of collection: October
- Value addition: pickle, chilli powder, chilli flakes
- Small green fruits

216. Munthiri mulak [*Capsicum frutescence*]

- Location: Thazhekcode, Malappuram (Lat: 10.9619°N, Long: 76.3039°E)
- Name of farmer: Suhara
- Uses: culinary
- Medicinal value: treats cough and head ache
- Season of collection: October
- Value addition: pickle, sauce, powder
- Small violet fruits

217. Mali mulak [*Capsicum frutescence*]

- Location: Anaviratty, Idukki [Lat 10.0149°N, Long 76.9915°E]
- Name of farmer: Latha Aiyappan
- Uses: culinary
- Medicinal value: treats cough and head ache
- Season of collection: November
- Value addition: pickle, sauce, powder

218. Violet kanthari [*Capsicum frutescence*]

- Location: Vellathooval, Idukki [Lat 9.9788°N, Long 77.0248°E]
- Uses: culinary
- Name of farmer: Shameela
- Medicinal value: treats cough and head ache
- Season of collection: January
- Value addition: pickle, sauce, powder
- Small violet fruits

219. Thairu mulak [*Capsicum sp.*]

- Location: Poovarani, Kottayam [Lat 9.6663°N, Long 76.7134°E]
- Uses: culinary
- Name of farmer: Vakkachan
- Medicinal value: treats cough and head ache
- Season of collection: February
- Value addition: pickle, sauce, powder
- Round fruits

220. Kodali mulak [*Capsicum sp.*]

- Location: Konikkara, Thrissur [Lat 10.4615°N, long 76.2606°E]
- Uses: culinary
- Name of farmer: Thomas
- Medicinal value: treats cough and head ache
- Season of collection: February
- Value addition: pickle, sauce, powder
- Small fruits

221. Jimikki mulak [*Capsicum sp.*]

- Location: Adichil, Thrissur [Lat 10.5276°N, long 76.2144°E]
- Uses: culinary
- Name of farmer: Aisal Kochumon
- Medicinal value: treats cough and head ache
- Season of collection: March
- Value addition: pickle, sauce, powder
- Bell shaped fruits

222. Komban mulak [*Capsicum sp.*]

- Location: Padinjarethara, Wayanad [Lat 11.6797°N, long 75.9748°E]
- Uses: culinary
- Name of farmer: Manual
- Medicinal value: treats cough and head ache
- Season of collection: March
- Value addition: pickle, sauce, powder
- Highly pungent fruits

223. Unda mulak [*Capsicum sp.*]

- Location: West Veliyam, Kollam [Lat 8.9416°N, long 76.7539°E]
- Uses: culinary
- Name of farmer: Prasad
- Medicinal value: treats cough and head ache
- Season of collection: March
- Value addition: pickle, sauce, powder
- Round, pungent fruits

224. Unda mulak [*Capsicum sp.*]

- Location: Nedumpayikulam, Kollam [Lat 8.9741°N, long 76.7034°E]
- Uses: culinary
- Name of farmer: Roy
- Medicinal value: treats cough and head ache
- Season of collection: March
- Value addition: pickle, sauce, powder
- Small fruits with black seeds

225. Clove bean [*Ipomea muricata*]

- Location: Venkulam, Trivandrum [Lat 8.319491°N, Long 77.114077°E]
- Uses: culinary
- Name of farmer: Rajamony
- Medicinal value: treats burns and sun scalds
- Season of collection: January
- Value addition: salad

226. Clove bean [*Ipomea muricata*]

- Location: Pulppally, Wayanad [Lat 11.7923°N, Long 76.1663°E]
- Uses: culinary
- Name of farmer: Selin
- Medicinal value: treats burns and sun scalds
- Season of collection: March
- Value addition: salad

227. Violet Nithya vazhuthana [*Ipomea muricata*]

- Location: Thazhekode, Malappuram [Lat 10.9619 °N, Long 76.3039 °E]
- Uses: culinary
- Name of the farmer: Suhara
- Medicinal value: anti-inflammatory
- Nutritive value: rich in anti-oxidants
- Season of collection: November
- Value addition: salad
- Violet fruits

228. Nadan Nithya vazhuthana [*Ipomea muricata*]

- Location: Ayira, Trivandrum [Lat 8.5241 °N, Long 76.9366 °E]
- Uses: culinary
- Nutritive value: rich in anti-oxidants

- Season of collection: March
- Value addition: salad
- Light green fruits

229. Clove bean [*Ipomea muricata*]

- Location: Anaviratti, Idukki [Lat 10.0172 °N, Long 76.9917°E]
- Uses: culinary
- Name of the farmer: Selina
- Medicinal value: treat and prevent cold
- Season of collection: November
- Value addition: salad
- Small light green fruits

230. Clove bean [*Ipomea muricata*]

- Location: Thodupuzha, Idukki [Lat 9.8813 °N, Long 76.7712 °E]
- Uses: culinary
- Name of the farmer: Antony
- Nutritive value: rich in anti-oxidants
- Season of collection: February
- Value addition: salad
- Green fruits

231. Nadan Nithya vazhuthana [*Ipomea muricata*]-

- Location: Kottanad, Pathanamthitta [Lat 9.4010 °N, Long 76.7423°E]
- Uses: culinary
- Name of the farmer: Nandakumar
- Nutritive value: rich in anti-oxidants
- Season of collection: March
- Value addition: salad
- Green fruits

232. Nadan vellari [*Cucumis melo*]

- Location: Aripa, Malappuram (Lat: 10.991118°N, Long: 76.168049°E)
- Uses: culinary
- Name of the farmer: Narayanan
- Medicinal value: lowers cholesterol level
- Season of collection: August
- Value addition: chutney, pickle, salad

233. Nadan vellari [*Cucumis melo*]

- Location: Bekal, Kasargode (Lat 12.4204°N, Long: 75.4204°E)
- Uses: culinary
- Name of the farmer: Prameela
- Medicinal value: anti-inflammatory
- Season of collection: September
- Value addition: chutney, pickle, salad

234. Pumpkin [*Cucurbita maxima*]

- Location: Parakkadav, Ernakulam (Lat: 10.197557°, Long: 76.346984°)
- Uses: culinary
- Name of the farmer: Polachan
- Medicinal value: treat obesity
- Season of collection: August
- Value addition: jam, jelly, marmalade, candy, puree, sauce
- Long tasty fruits

235. Pumpkin [*Cucurbita maxima*]

- Location: Vellarikund, Kasargode (Lat: 12.3996°N, Long: 75.2869°E)
- Uses: culinary
- Name of the farmer: Dolly
- Medicinal value: treat obesity
- Season of collection: September
- Value addition: jam, jelly, marmalade
- Long tasty fruits

236. Pumpkin [*Cucurbita pepo*]

- Location: Mattilayam, Wayanad (Lat: 11.7423°N, Long: 75.8519°E)
- Uses: culinary
- Name of the farmer: Abraham
- Medicinal value: regulate blood pressure
- Season of collection: September
- Value addition: candy, puree, sauce
- Green in colour

237. Pumpkin [*Cucurbita pepo*]

- Location: Paloorakav, Idukki [Lat 9.5373°N, Long 76.9386°E]
- Uses: culinary
- Name of the farmer: Jose

- Medicinal value: treat burns and sun scald
- Season of collection: January
- Value addition: jam, jelly, marmalade
- Bigger fruits

238. Neelan mathan [*Cucurbita pepo*]

- Location: Venkulam, Trivandrum [Lat 8.3194°N, Long 77.1140°E]
- Uses: culinary
- Name of the farmer: Rajamony
- Medicinal value: treat intestinal inflammation
- Season of collection: January
- Value addition: jam, jelly, marmalade
- Large fruits

239. Vattan mathan [*Cucurbita pepo*]

- Location: Pulpally, Wayanad [Lat 11.7923°N, Long 76.1663°E]
- Uses: culinary
- Name of the farmer: Selin
- Medicinal value: treat burns and sun scald
- Season of collection: March
- Value addition: jam, jelly, marmalade
- Circular fruits

240. Mathan [*Cucurbita pepo*]

- Location: Mananthavadi, Wayanad [Lat 11.8061°N, Long 76.0599°E]
- Uses: culinary
- Name of the farmer: Jose
- Medicinal value: regulate blood pressure
- Season of collection: June
- Value addition: jam, jelly, marmalade
- Large fruits

241. Pumpkin [*Cucurbita moschata*]

- Location: Kalpetta, Wayanad [Lat 11.6103°N, Long 76.0828°E]
- Uses: culinary
- Medicinal value: regulate blood pressure, cholesterol
- Season of collection: July
- Value addition: jam, jelly, marmalade
- Bright orange-coloured fruits

242. Pumpkin [*Cucurbita moschata*]

- Location: Wayanad [Lat 11.6994°N, Long 76.0773°E]
- Uses: culinary
- Name of the farmer: Sooraj
- Medicinal value: regulate blood pressure, cholesterol
- Season of collection: July
- Value addition: puree, flour
- Medium sized fruits

243. Nadan mathan [*Cucurbita moschata*]

- Location: Cherthala, Wayanad [Lat 9.6741°N, Long 76.3401°E]
- Uses: culinary
- Name of the farmer: Prakashan
- Medicinal value: regulate blood pressure, cholesterol
- Season of collection: August
- Value addition: puree, flour
- Medium sized fruits

244. Pumpkin [*Cucurbita moschata*]

- Location: Elathur, Kozhikode [Lat 11.3201°N, Long 75.7449°E]
- Uses: culinary
- Name of the farmer: Raja Mohanan Pilla
- Medicinal value: regulate blood pressure, cholesterol
- Season of collection: September
- Value addition: puree, flour, sauce
- Medium sized fruits

245. Neymathan [*Cucurbita moschata*]

- Location: Perambra, Kozhikode [Lat 11.5903°N, Long 75.6652°E]
- Uses: culinary
- Name of the farmer: Ajitha
- Medicinal value: regulate blood pressure, cholesterol
- Season of collection: October
- Value addition: puree, flour, sauce
- Small orange fruits

246. Nadan mathan [*Cucurbita moschata*]

- Location: Thodupuzha, Idukki [Lat 9.8813°N, Long 76.7712°E]
- Uses: culinary
- Name of the farmer: Antony
- Medicinal value: regulate blood pressure, cholesterol
- Season of collection: November
- Value addition: puree, flour, sauce
- Medium fruits

247. Nadan mathan [*Cucurbita pepo*]

- Location: Ezhumattor, Pathanamthitta [Lat 9.4212°N, Long 76.7019°E]
- Uses: culinary
- Name of the farmer: Thomas John
- Medicinal value: regulate blood pressure, cholesterol
- Season of collection: March
- Value addition: puree, flour, sauce
- Oval fruits

248. Attapady mathan [*Cucurbita pepo*]

- Location: Attapady, Palakkad [Lat 11.0681°N, Long 76.5662°E]
- Uses: culinary
- Medicinal value: regulate blood pressure, cholesterol
- Season of collection: March
- Value addition: puree, flour, sauce
- Round fruits

249. Chathurapayar [*Psophocarpus tetragonolobus*]

- Location: Pulppaly, Wayanad [Lat 11.7923°N, Long 76.1663°E]
- Uses: culinary
- Name of the farmer: Selin
- Medicinal value: treat obesity
- Season of collection: March
- Value addition: pickle, fermented products

250. Chathurapayar [*Psophocarpus tetragonolobus*]

- Location: Kanhirode, Kannur [Lat 11.9190°N, Long 75.6479°E]
- Uses: culinary
- Name of the farmer: Shimjith
- Medicinal value: treat obesity

- Season of collection: March
- Value addition: pickle, fermented products

251. Winged bean [*Psophocarpus tetragonolobus*]

- Location: Mananthavadi, Wayanad [Lat 11.8061°N, Long 76.0599°E]
- Uses: culinary
- Name of the farmer: Jose
- Medicinal value: treat obesity
- Season of collection: June
- Value addition: pickle, fermented products

252. Chathurapayar [*Psophocarpus tetragonolobus*]

- Location: Haripad, Alappuzha [Lat 9.2799°N, Long 76.4592°E]
- Uses: culinary
- Name of the farmer: Rajamony
- Medicinal value: anti-inflammatory
- Nutritive value: rich in anti-oxidants
- Season of collection: July
- Value addition: pickle, fermented products

253. Winged bean [*Psophocarpus tetragonolobus*]

- Location: Anaviratty, Idukki [Lat 10.0172°N, Long 76.9917°E]
- Uses: culinary
- Name of the farmer: Seleena
- Medicinal value: treat head ache, cough
- Season of collection: November
- Medium green colour fruits
- Value addition: pickle, fermented products

254. Winged bean [*Psophocarpus tetragonolobus*]

- Location: Chelachuvadu, Idukki [Lat 9.9182°N, Long 76.9621°E]
- Uses: culinary
- Name of the farmer: Sebastin
- Medicinal value: anti-inflammatory
- Nutritive value: rich in anti-oxidants
- Season of collection: November
- Value addition: pickle, fermented products
- Medium pods

255. Winged bean [*Psophocarpus tetragonolobus*]

- Location: Vellathooval, Idukki [Lat 10.0092°N, Long 76.9838 °E]
- Uses: culinary
- Name of the farmer: Shameela
- Medicinal value: anti-inflammatory
- Nutritive value: rich in anti-oxidants
- Season of collection: January
- Value addition: pickle, fermented products
- Medium pods

256. Nadan chathura payar [*Psophocarpus tetragonolobus*]

- Location: Ayira, Trivandrum [Lat 8.52°N, Long 76.94°E]
- Uses: culinary
- Medicinal value: anti-inflammatory
- Nutritive value: rich in anti-oxidants
- Season of collection: March
- Value addition: pickle, fermented products
- Short green fruits

257. Nadan chathura payar [*Psophocarpus tetragonolobus*]

- Location: Adichil, Trivandrum [Lat 10.5303°N, Long 76.2147°E]
- Uses: culinary
- Name of the farmer: Aisal Kochumon
- Medicinal value: anti-inflammatory
- Nutritive value: rich in anti-oxidants
- Season of collection: March
- Value addition: pickle, fermented products
- Short purple flowers

258. Nadan chathura payar [*Psophocarpus tetragonolobus*]

- Location: West Veliyam, Kollam [Lat 8.9416°N, Long 76.7539 °E]
- Uses: culinary
- Name of the farmer: Prasanna
- Medicinal value: anti-inflammatory
- Nutritive value: rich in anti-oxidants
- Season of collection: March
- Value addition: pickle, fermented products
- Small purple fruits

259. Nadan chathura payar [*Psophocarpus tetragonolobus*]

- Location: West Veliyam, Kollam [Lat 8.9416°N, Long 76.7539 °E]
- Uses: culinary
- Name of the farmer: Ambika
- Medicinal value: anti-inflammatory
- Nutritive value: rich in anti-oxidants
- Season of collection: March
- Value addition: pickle, fermented products
- Small green fruits

260. Vazhuthana [*Solanum melongena*]

- Location: Paloor kavu, Idukki [Lat 9.5371°N, Long 76.9338 °E]
- Uses: culinary, kondattam
- Name of the farmer: Jose
- Medicinal value: Treat inflammatory condition
- Season of collection: July
- Value addition: pickle, kondattam

261. Vazhuthana [*Solanum melongena*]

- Location: Periya, Kasaragod [Lat 12.4076°N, Long 75.0932 °E]
- Uses: culinary, kondattam
- Name of the farmer: Karunakaran
- Medicinal value: Treat inflammatory condition
- Season of collection: September
- Value addition: pickle, sauce, puree
- Tasty, More demand

262. Vengeri vazhuthana [*Solanum melongena*]

- Location: Kozhikode [lat-11.2588°N, long-75.7804°E]
- Name of farmer: Harikrishnan
- Uses: culinary, kondattam
- Medicinal value: Treat cholera
- Season of collection: September
- Value addition: pickle, sauce, kondattam
- Tasty, length-50cm, pest and disease resistant

263. Nadan vazhuthana [*Solanum melongena*]

- Location: Erimayur, Palakkad [Lat: 10.6675°N, Long: 76.5424°E]
- Name of farmer: Regina
- Uses: culinary
- Medicinal value: Treat inflammatory condition
- Season of collection: November
- Value addition: pickle, kondattam,
- Have pungency

264. Nadan vazhuthana [*Solanum melongena*]

- Location: Alathur, Palakkad [Lat: 10.6472°N, Long: 76.5375°E]
- Name of farmer: Indira
- Uses: culinary
- Medicinal value: Treat cholera
- Season of collection: November
- Value addition: pickle, sauce, chips
- Violet colour

265. Neela vazhuthana [*Solanum melongena*]

- Location: Palooravu, Idukki [Lat: 9.5373°N, Long: 76.9386°E]
- Name of farmer: Jose
- Uses: culinary
- Medicinal value: Treat cholera
- Season of collection: January
- Value addition: pickle, chips
- Violet colour

266. Vazhuthana green [*Solanum melongena*]

- Location: Palooravu, Idukki [Lat: 9.5373°N, long: 76.9386°E]
- Name of farmer: Jose
- Uses: culinary
- Medicinal value: Treat cholera
- Season of collection: January
- Value addition: pickle, kondattam
- Green colour

267. Light violet brinjal [*Solanum melongena*]

- Location: Paloor kavu, Idukki [Lat: 9.5373°N, long: 76.9386°E]
- Name of farmer: Jose
- Uses: culinary
- Medicinal value: Treat cholera
- Season of collection: January
- Value addition: pickle, chips
- Light violet colour

268. Kottaram kathri [*Solanum melongena*]

- Location: Nedumanghad, Trivandrum [Lat: 8.6490°N, long: 77.1015°E]
- Name of farmer: Sajan
- Uses: culinary
- Medicinal value: Treat cholera
- Season of collection: January
- Value addition: pickle, kondattam
- Violet colour

269. Neela neelan vazhuthana [*Solanum melongena*]

- Location: Nedumanghad, Trivandrum [Lat: 8.6490°N, long: 77.1015°E]
- Name of farmer: Sajan
- Uses: culinary
- Medicinal value: Treat cholera
- Season of collection: January
- Value addition: pickle, chips
- Long

270. Cheru vazhuthana [*Solanum melongena*]

- Location: Kanhirod, Kannur [Lat: 11.9190°N, long: 75.6479°E]
- Name of farmer: Shinjith
- Uses: culinary
- Medicinal value: Treat cholera
- Season of collection: March
- Value addition: pickle, chips

271. Vazhuthana [*Solanum melongena*]

- Location: Wayanad [Lat: 11.6994°N, long: 76.0773°E]
- Name of farmer: Sooraj
- Uses: culinary

- Medicinal value: Treat cholera
- Season of collection: March
- Value addition: pickle, chips
- Violet in colour

272. Vazhuthana [*Solanum melongena*]

- Location: Mananthavady, Wayanad [lat: 11.9061°N, long: 76.0599°E]
- Name of farmer: Jose
- Uses: culinary
- Medicinal value: treat diabetes, cholestrol
- Season of collection: June
- Value addition: pickle
- Long and green

273. Violet vazhuthana [*Solanum melongena*]

- Location: Karshakamithram, Tvm (Lat- 8.5209°N, Long- 76.9412°E)
- Name of farmer: Rajamony
- Uses: culinary
- Season of collection: July
- Value addition: pickle
- Violet in colour

274. Vazhuthana [*Solanum melongena*]

- Location: Wayanad [Lat- 11.9061°N, long- 76.0599°E]
- Name of farmer: Sunil
- Uses: culinary
- Medicinal value: treat inflammatory condition
- Season of collection: August
- Value addition: pickle, chips
- Medium sized fruits

275. Illi komban [*Solanum melongena*]

- Location: Wayanad [Lat- 11.9061°N, long- 76.0599°E]
- Name of farmer: Sunil
- Uses: culinary
- Medicinal value: treat inflammatory condition
- Season of collection: August
- Value addition: pickle, kondattam
- Very long fruits

276. Nandan brinjal [*Solanum melongena*]

- Location: Trivandrum [Lat- 8.5241°N, long- 76.9366°E]
- Uses: culinary
- Medicinal value: treat inflammatory condition
- Season of collection: September
- Value addition: pickle
- Medium sized fruit

277. Vazhuthana [*Solanum melongena*]

- Location: Agali, Wayanad [Lat- 11.1014°N, long- 76.6471°E]
- Name of farmer: Kannan G.
- Uses: culinary
- Medicinal value: treat inflammatory condition
- Season of collection: October
- Value addition: pickle, kondattam
- Violet to white colour

278. Vazhuthana [*Solanum melongena*]

- Location: Thazhekode, Malappuram [Lat- 10.9619°N, long- 76.3039°E]
- Name of farmer: Suhara
- Uses: culinary
- Medicinal value: treat inflammatory condition
- Season of collection: October
- Value addition: pickle
- Violet colour fruit

279. Violet pacha cheruth [*Solanum melongena*]

- Location: Thazhekode, Malapuram [Lat- 10.9619°N, long-76.3039°E]
- Name of farmer: Suhara
- Uses: culinary
- Medicinal value: treat inflammatory condition
- Season of collection: November
- Value addition: pickle
- Violet colour medium round

280. Cheru vazhuthana [*Solanum melongena*]

- Location: Poochapra, Idukki [Lat- 9.8306°N, long- 76.8416°E]
- Name of farmer: Usha
- Uses: culinary
- Medicinal value: Treat kidney disease and fever
- Season of collection: November
- Value addition: pickle
- Small sized brinjal

281. Vella vazhuthana [*Solanum melongena*]

- Location: Vandiperiyar, Idukki [Lat- 9.5721°N, long- 77.0896°E]
- Name of farmer: Thampi Das
- Uses: culinary
- Medicinal value: beneficial for heart health
- Season of collection: November
- Value addition: pickle
- White coloured fruit

282. Blue brinjal [*Solanum melongena*]

- Location: Vandiperiyar, Idukki [Lat- 9.5721°N, long- 77.0896°E]
- Name of farmer: Thampi Das
- Uses: culinary
- Medicinal value: treat headache, cough
- Season of collection: November
- Value addition: pickle
- Dark brown colour

283. Vengeri vazhuthana [*Solanum melongena*]

- Location: Thodupuzha, Idukki [Lat- 9.8959°N, long- 76.7184°E]
- Name of farmer: Antony
- Uses: culinary
- Medicinal value: treat headache, cough
- Season of collection: February
- Value addition: pickle
- Long, green-violet fruit

284. Vengeri vazhuthana [*Solanum melongena*]

- Location: Vengeri, Kozhikode [Lat- 11.3045°N, long- 75.7967°E]
- Name of farmer: Devadasan
- Uses: culinary
- Medicinal value: treat headache, cough
- Season of collection: February
- Value addition: juice
- Long violet fruit

285. Nadan vazhuthana [*Solanum melongena*]

- Location: Poovarani, Kottayam [Lat- 9.6663°N, long- 76.7134°E]
- Name of farmer: Vakkachan
- Uses: culinary
- Medicinal value: treat headache, cough
- Season of collection: February
- Value addition: pickle
- Blue, big size fruits

286. Vengeri vazhuthana [*Solanum melongena*]

- Location: Adichil, Thrissur [Lat- 10.2904°N, long- 76.4049°E]
- Name of farmer: Aisal Kochumon
- Uses: culinary
- Medicinal value: treat headache, cough
- Season of collection: March
- Value addition: Jam

287. Onattu vazhuthana [*Solanum melongena*]

- Location: Adichil, Thrissur [Lat- 10.2904°N, long- 76.4049°E]
- Name of farmer: Aisal Kochumon
- Uses: culinary
- Medicinal value: treat headache, cough
- Season of collection: March
- Value addition: pickle
- Round shape

288. Nadan vazhuthana [*Solanum melongena*]

- Location: Ezhumattor, Pathanamthitta [Lat- 9.4212°N, long- 76.7019°E]
- Name of farmer: Thomas John
- Uses: culinary
- Medicinal value: treat headache, cough
- Season of collection: March
- Value addition: pickle
- Medium fruit size

289. Vazhuthana I [*Solanum melongena*]

- Location: Mattilayam, Wayanad [Lat- 11.7423°N, long- 75.8519°E]
- Name of farmer: Abraham
- Uses: culinary
- Medicinal value: Treat cholera
- Season of collection: September
- Value addition: pickle

290. Vazhuthana II [*Solanum melongena*]

- Location: Mattilayam, Wayanad [lat-11.7423°N, long-75.8519°E]
- Name of farmer: Abraham
- Uses: culinary, kondattam
- Medicinal value: Treat cholera
- Season of collection: September
- Value addition: pickle

291. Vazhuthana III [*Solanum melongena*]

- Location: Mattilayam, Wayanad [Lat- 11.7423°N, long- 75.8519°E]
- Name of farmer: Abraham
- Uses: culinary
- Medicinal value: Treat cholera
- Season of collection: September
- Value addition: pickle, kondattam

292. Creeping cucumber [*Solena amplexicaulis*]

- Location: Vellanikkara, Thrissur [Lat- 11.50°N, long- 76.350°E]
- Uses: Culinary
- Medicinal value: Treat digestive problems
- Season of collection: August
- Value addition: pickle, juice

- Small fruit

293. Nadan vellari [*Cucumis sativus*]

- Location: Nedinjal, Trivandrum [Lat- 8.4182°N, long- 77.0081°E]
- Name of farmer: Aneesh
- Uses: Culinary
- Medicinal value: Reduce swelling
- Season of collection: January
- Value addition: pickle, juice
- Long fruit

294. Kakkari (vellari) [*Cucumis sativus*]

- Location: Venkulam, Trivandrum [Lat- 8.3194°N, long- 77.1140°E]
- Name of farmer: Rajamony
- Uses: Culinary
- Medicinal value: Reduce swelling
- Season of collection: January
- Value addition: pickle, juice
- Have large leaves

295. Salad vellari [*Cucumis sativus*]

- Location: Harippad, Alappuzha [Lat- 9.2818°N, long- 76.4442°E]
- Name of farmer: Vani prakriti
- Uses: Culinary
- Medicinal value: Reduce swelling
- Season of collection: January
- Value addition: pickle, juice
- Have large leaves

296. Kakkiri [*Cucumis sativus*]

- Location: Kanhirod, Kannur [Lat- 11.9190°N, long- 75.6479°E]
- Name of farmer: Shinjith
- Uses: Culinary
- Medicinal value: Reduce swelling
- Season of collection: January
- Value addition: pickle, juice
- Bright yellow flowers

297. Cheriya vellari [*Cucumis sativus*]

- Location: Manivayal, Wayanad [Lat- 11.6009°N, long- 76.0813°E]
- Name of farmer: Sreerajan
- Uses: Culinary
- Medicinal value: Helps to lower cholesterol level
- Season of collection: June
- Value addition: pickle, juice
- Weight -1/2 kg, large number of fruits [60 fruit/vine]

298. Vellari [*Cucumis sativus*]

- Location: Ramanthali, Kannur [Lat- 12.1057°N, long- 75.2072°E]
- Name of farmer: Sreedharan
- Uses: Culinary
- Medicinal value: anti-inflammatory and antioxidant
- Season of collection: October
- Value addition: pickle
- Oval in shape

299. Vellari [*Cucumis sativus*]

- Location: Thazhekode, Malapuram [Lat- 10.9619°N, long- 76.3039°E]
- Name of farmer: Suhara
- Uses: Culinary
- Medicinal value: anti-inflammatory and antioxidant
- Season of collection: October
- Value addition: pickle
- Oval in shape

300. Kanivellari [*Cucumis sativus*]

- Location: Kappumthala, Kottayam [Lat- 9.7659°N, long- 76.5267°E]
- Name of farmer: Thomas Philip
- Uses: Culinary
- Medicinal value: anti-inflammatory and antioxidant
- Season of collection: November
- Value addition: Juice
- Orange colour with yellow stripes

301. Vellarikka [*Cucumis sativus*]

- Location: Kappumthala, Kottayam [Lat- 9.7659°N, long-76.5267°E]
- Name of farmer: Thomas Philip
- Uses: Culinary
- Medicinal value: anti-inflammatory and antioxidant
- Season of collection: November
- Value addition: Juice
- Oval in shape

302. Vellari [*Cucumis sativus*]

- Location: Anaviratty, Idukki [Lat- 10.0149°N, long- 76.9915°E]
- Name of farmer: Latha Ayappan
- Uses: Culinary
- Medicinal value: anti-inflammatory and antioxidant
- Season of collection: November
- Value addition: Juice
- Medium pods

303. Ingivellari [*Cucumis sativus*]

- Location: Thodupuzha, Idukki [Lat- 9.8959°N, long- 76.7184°E]
- Name of farmer: Antony
- Uses: Culinary
- Medicinal value: anti-inflammatory and antioxidant
- Season of collection: November
- Value addition: Juice
- Smell of ginger

304. Mullan vellari [*Cucumis sativus*]

- Location: Cheelachuvadu, Idukki [Lat- 9.9182°N, long- 76.9621°E]
- Name of farmer: Sebastain
- Uses: Culinary
- Medicinal value: inflammation reduction.
- Season of collection: December
- Value addition: Juice, pickle
- Cucumber has thorns

305. Pothencode vellari [*Cucumis sativus*]

- Location: Ayira, Trivandrum, [Lat- 8.5241°N, long- 76.9366°E]
- Uses: Culinary
- Medicinal value: anti-inflammatory
- Season of collection: March
- Value addition: Juice
- Big sized fruit

306. Nadan vellari [*Cucumis sativus*]

- Location: Ezhukone, Kollam [Lat- 8.9858°N, long- 76.7163°E]
- Nme of farmer: Maneesh
- Uses: Culinary
- Medicinal value: treat headache, cough
- Season of collection: March
- Value addition: Juice

307. Amara payar [*Lablab purpureus*]

- Location: Harippad, Alappuzha [Lat- 9.2818°N, long- 76.4442°E]
- Name of farmer: Vani Prakrithi
- Uses: Culinary
- Medicinal value Anti-microbial, anti-fungal
- Season of collection: January
- Value addition: salad, soup
- Leaf is hairy

308. Amara payar lablab [*Lablab purpureus*]

- Location: Harippad, Alappuzha [Lat- 9.2818°N, long- 76.4442°E]
- Name of farmer: Vani Prakrithi
- Uses: Culinary
- Medicinal value: Anti- microbial, anti-fungal
- Season of collection: January
- Value addition: stew, soup, salad
- Leaf is hairy

309. Amara payar lablab bush [*Lablab purpureus*]

- Location: Harippad, Alappuzha [Lat- 9.2818°N, long- 76.4442°E]
- Name of farmer: Vani Prakrithi
- Uses: Culinary
- Medicinal value: Anti-microbial, anti-fungal

- Season of collection: January
- Value addition: salad, soup
- Leaf is hairy

310. Amara payar [*Lablab purpureus*]

- Location: Pulpally, Wayanad [Lat- 11.7923°N, long- 76.1663°E]
- Name of farmer: Selin
- Uses: Culinary
- Medicinal value: Treat obesity
- Season of collection: March
- Value addition: salad, soup
- Smaller in size

311. Aaattukomban amara [*Lablab purpureus*]

- Location: Attappady, Palakkad [Lat- 11.50°N, long- 76.350°E]
- Name of farmer: Ponnann
- Uses: Culinary
- Medicinal value: anti-inflammatory effects.
- Season of collection: September
- Value addition: pickle, soup
- Soft pods, drought tolerant

312. Amara payar [*Lablab purpureus*]

- Location: Selliampara, Idukki [Lat- 9.9950°N, long- 77.0190°E]
- Name of farmer: Thomas Varkey
- Uses: Culinary
- Medicinal value: antioxidants and beneficial for heart health.
- Season of collection: February
- Value addition: salad, soup
- Green colour

313. Amara nadan [*Lablab purpureus*]

- Location: Thodupuzha, Idukki [Lat- 9.8959°N, long- 76.7184°E]
- Name of farmer: Antony
- Uses: Culinary
- Medicinal value: antioxidants and beneficial for heart health.
- Season of collection: February
- Value addition: salad, soup
- Dark green colour fruits

314. Nadan amara [*Lablab purpureus*]

- Location: Kuthiakode, Alappuzha [Lat- 9.7934°N, long- 76.3160°E]
- Name of farmer: Prakashan
- Uses: Culinary
- Medicinal value: antioxidants and beneficial for heart health.
- Season of collection: March
- Value addition: soup, salad
- Small fruit

315. Attapady attukomb avara [*Lablab purpureus*]

- Location: Attapady, Palakkad [Lat- 11.0681°N, long- 76.5662°E]
- Name of farmer: Jyothi
- Uses: Culinary
- Medicinal value: antioxidants and beneficial for heart health.
- Season of collection: February
- Value addition: salad, soup
- Unique curved shape

316. Neelan koval [*Coccinia indica*]

- Location: Purakkadi, Wayanad [Lat- 11.6009°N, long- 76.0813°E]
- Uses: Culinary
- Name of farmer: Sreeranjana
- Medicinal value: Treat diabetes
- Season of collection: September
- Value addition: kondattam, juice
- Lengthy, more tasty

317. Jack bean [*Canavalia ensiformis*]

- Location: Harippad, Alappuzha [Lat- 9.2818°N, long- 76.4442°E]
- Name of farmer: Vani Prakrithi
- Uses: Culinary
- Medicinal value: Treat of athletes foot and acne
- Season of collection: January
- Value addition: dried soup mixes
- Long fruits

318. Kutti vaalari [*Canavalia ensiformis*]

- Location: Karshakamithram, Trivandrum [Lat- 8.52°N, long- 76.94°E]
- Name of farmer: Rajamony
- Uses: Culinary
- Medicinal value: Help in digestion
- Season of collection: July
- Value addition: dried soup mixes
- Small sized fruits

319. Jack bean [*Canavalia ensiformis*]

- Location: Cheelachuvadu, Idukki [Lat- 9.9182°N, long- 76.9621°E]
- Name of farmer: Sebastain
- Uses: Culinary
- Medicinal value: anti-inflammatory and anti-oxidant properties
- Season of collection: December
- Value addition: dried soup mixes
- Small pods

320. Kutti valari [*Canavalia ensiformis*]

- Location: Ayira, Trivandrum [Lat- 8.5241°N, long- 76.9366°E]
- Uses: Culinary
- Medicinal value: treat headache, cough
- Season of collection: March
- Value addition: dried soup mixes
- Small pods

321. Kutti valari [*Canavalia ensiformis*]

- Location: Adichil, Thrissur [Lat- 10.52°N, long- 76.21°E]
- Name of farmer: Aisal Kochmon
- Uses: Culinary
- Medicinal value: anti-diabetic and anti-inflammatory
- Season of collection: March
- Value addition: dried soup mixes
- Slender pods

322. Nadan peechil [*Luffa acutangula*]

- Location: Chelachuvad, Idukki [Lat- 9.9186°N, long- 76.9621°E]
- Name of farmer: Sebastain
- Uses: Culinary

- Medicinal value: Treat and prevent colds
- Season of collection: November
- Value addition: pickle, pasta, soup
- Medium sized fruits

323. Assam ridge gourd [*Luffa acutangula*]

- Location: Kadampuzha, Malapuram [Lat- 10.9536°N, long- 76.0242°E]
- Name of farmer: Avarankutty
- Uses: Culinary
- Season of collection: August
- Value addition: pasta, soup
- More tasty

324. Peechil [*Luffa acutangula*]

- Location: Paloor kavu, Idukki [Lat- 9.5371°N, long- 76.9386°E]
- Name of farmer: Jose
- Uses: Culinary
- Medicinal value: Treat and prevent colds
- Season of collection: July
- Value addition: chutney, soup mix
- Lengthy and round fruit

325. Peechil ball [*Luffa acutangula*]

- Location: Paloor kavu, Idukki [Lat- 9.5371°N, long- 76.9386°E]
- Name of farmer: Jose
- Uses: Culinary
- Medicinal value: Treat and prevent colds
- Season of collection: July
- Value addition: chutney, soup mix
- Medium sized

326. Peechil [*Luffa acutangula*]

- Location: Harippad, Alappuzha [Lat- 9.2818°N, long- 76.4442°E]
- Name of farmer: Vani Prakrithi
- Uses: Culinary
- Medicinal value: Treat colds
- Season of collection: January
- Value addition: pickle, soup mix
- Good taste

327. Peechil II [*Luffa acutangula*]

- Location: Harippad, Alappuzha [Lat- 9.2818°N, long- 76.4442°E]
- Name of farmer: Vani Prakrithi
- Uses: Culinary
- Medicinal value: Treat colds
- Season of collection: January
- Value addition: juice, pickle, chips
- Good taste

328. Peechil III [*Luffa acutangula*]

- Location: Harippad, Alappuzha [Lat- 9.2818°N, long- 76.4442°E]
- Name of farmer: Vani Prakrithi
- Uses: Culinary
- Medicinal value: Treat colds
- Season of collection: January
- Value addition: juice, pickle, soup mix
- Good taste

329. Peechil IV [*Luffa acutangula*]

- Location: Harippad, Alappuzha [Lat- 9.2818°N, long- 76.4442°E]
- Name of farmer: Vani Prakrithi
- Uses: Culinary
- Medicinal value: Treat colds
- Season of collection: January
- Value addition: pickle, soup mix
- Good taste

330. Peechil V [*Luffa acutangula*]

- Location: Harippad, Alappuzha [Lat- 9.2818°N, long- 76.4442°E]
- Name of farmer: Vani Prakrithi
- Uses: Culinary
- Medicinal value: Treat colds
- Season of collection: January
- Value addition: jam
- Good taste

331. Peechil VI [*Luffa acutangula*]

- Location: Harippad, Alappuzha [Lat- 9.2818°N, long- 76.4442°E]
- Name of farmer: Vani Prakrithi
- Uses: Culinary
- Medicinal value: Treat colds
- Season of collection: January
- Value addition: soup, chips
- Good taste

332. Peechil VII [*Luffa acutangula*]

- Location: Harippad, Alappuzha [Lat- 9.2818°N, long- 76.4442°E]
- Name of farmer: Vani Prakrithi
- Uses: Culinary
- Medicinal value: Treat colds
- Season of collection: January
- Value addition: juice, soup
- Good taste

333. Peechil VIII [*Luffa acutangula*]

- Location: Harippad, Alappuzha [Lat- 9.2818°N, long- 76.4442°E]
- Name of farmer: Vani Prakrithi
- Uses: Culinary
- Medicinal value: Treat colds
- Season of collection: January
- Value addition: juice, soup
- Good taste

334. Peechil [*Luffa acutangula*]

- Location: Cherthala, Alappuzha [Lat- 9.6741°N, long- 76.3401°E]
- Name of farmer: Prakashan
- Uses: Culinary
- Medicinal value: Treat colds
- Season of collection: March
- Value addition: juice, soup
- Shiny leaves

335. Rajasthan peechil [*Luffa acutangula*]

- Location: Thodupuzha, Idukki [Lat- 9.8959°N, long- 76.7184°E]
- Name of farmer: Antony
- Uses: Culinary
- Medicinal value: Lower cholesterol effects
- Season of collection: November
- Value addition: pickle, juice, soup
- Medium sized fruits

336. Nadan peechil [*Luffa acutangula*]

- Location: Thodupuzha, Idukki [Lat- 9.8959°N, long- 76.7184°E]
- Name of farmer: Antony
- Uses: Culinary
- Medicinal value: Treat and prevent colds
- Season of collection: February
- Value addition: juice, soup
- Ridges are prominent

337. Nadan peechil [*Luffa acutangula*]

- Location: Poovarani, Kottayam [Lat- 9.6663°N, long- 76.7134°E]
- Name of farmer: Vakkachan
- Uses: Culinary
- Medicinal value: Treat and prevent colds
- Season of collection: February
- Value addition: juice, soup
- Long fruit

338. Peechil [*Luffa acutangula*]

- Location: Chelachuvad, Idukki [Lat- 9.9182°N, long- 76.9621°E]
- Name of farmer: Sebastain
- Uses: Culinary
- Medicinal value: Treat and prevent colds
- Season of collection: November
- Value addition: pickle, soup, juice
- Medium sized fruits

339. Nadan padavalam [*Trichosanthes cucumerina*]

- Location: Punnamchola, Malapuram [Lat- 11.0236°N, long- 75.9591°E]
- Name of farmer: Sukoor
- Uses: Culinary
- Medicinal value: Treat diabetes
- Season of collection: August
- Value addition: dried slices, powder, paste
- Small in size, high productivity

340. Nadan padavalam [*Trichosanthes cucumerina*]

- Location: Mazhuvannor, Ernakulam [Lat- 910.0129°N, long- 76.50°E]
- Name of farmer: Valsa
- Uses: Culinary
- Medicinal value: Treat indigestion
- Season of collection: August
- Value addition: dried slices, powder
- Good taste

341. Naga padavalam [*Trichosanthes cucumerina*]

- Location: Vellarikund, Kasarkod, [Lat- 12.3996°N, long- 75.2869°E]
- Name of farmer: Dolly
- Uses: Culinary
- Medicinal value: Treat indigestion
- Season of collection: September
- Value addition: dried slice, powder
- Long fruit -276 cm like snake

342. Kutti padavalam [*Trichosanthes cucumerina*]

- Location: Venkulam, Trivandrum [Lat- 8.3174°N, long- 77.1140°E]
- Name of farmer: Rajamony
- Uses: Culinary
- Medicinal value: Treat indigestion
- Season of collection: January
- Value addition: powder, paste
- Large in size

343. Naadan padavalam [*Trichosanthes cucumerina*]

- Location: Palappooru, Trivandrum [Lat- 8.4367°N, long- 76.9801°E]
- Uses: Culinary
- Medicinal value: offers digestive aid, blood sugar regulation
- Season of collection: July
- Value addition: powder, paste
- Long fruit

344. Valli padavalam [*Trichosanthes cucumerina*]

- Location: Karshakamithram, Trivandrum [Lat- 8.5024°N, long- 76.9633°E]
- Uses: Culinary
- Medicinal value: offers digestive aid, blood sugar regulation
- Season of collection: July
- Value addition: powder, paste
- Very tender stem and small fruits

345. Nadan padavalam [*Trichosanthes cucumerina*]

- Location: Cherthala, Alappuzha [Lat- 9.6741°N, long- 76.3401°E]
- Name of farmer: Prakashan
- Uses: Culinary
- Medicinal value: offers digestive aid, blood sugar regulation
- Season of collection: August
- Value addition: powder, paste, dried slice
- Long fruits

346. Padavalam [*Trichosanthes cucumerina*]

- Location: Wayanad [Lat- 11.6994°N, long- 76.0773°E]
- Name of farmer: Sunil
- Uses: Culinary
- Medicinal value: offers digestive aid, blood sugar regulation
- Season of collection: August
- Value addition: dried slice, paste, powder
- Very long green colour fruits

347. Neelan padavalam [*Trichosanthes cucumerina*]

- Location: Thazhekode, Malapuram [Lat- 10.9619°N, long- 76.3039°E]
- Name of farmer: Suhara
- Uses: Culinary
- Medicinal value: offers digestive aid, blood sugar regulation

- Season of collection: October
- Value addition: dried slice, powder
- Long fruit size

348. Neelan padavalam [*Trichosanthes cucumerina*]

- Location: Ettumanur, Kottayam [Lat: 9.6706° N, long: 76.5579° E]
- Uses: Culinary
- Medicinal value: offers digestive aid, blood sugar regulation
- Season of collection: November
- Value addition: pickle
- Long fruit size

349. Neelan padavalam [*Trichosanthes cucumerina*]

- Location: Poovarani, Kottayam [Lat- 9.6663°N, long- 76.7134°E]
- Name of farmer: Vakkachan
- Uses: Culinary
- Medicinal value: anti-inflammatory and antioxidant
- Season of collection: February
- Value addition: dried slice, paste, powder
- Long fruit size

350. Nadan padavalam [*Trichosanthes cucumerina*]

- Location: Ezhumattor, Pathanmthitta [Lat- 9.4212°N, long- 76.7019°E]
- Name of farmer: Thomas John
- Uses: Culinary
- Medicinal value: heart health and digestive health benefits
- Season of collection: March
- Value addition: paste, powder
- Small fruits

351. Pottu vellari [*Cucumis melo*]

- Location: Vellangallor, Thrissur [Lat- 10.3031°N, long- 76.2090°E]
- Name of farmer: Vinod
- Uses: Culinary
- Medicinal value: antioxidant, cooling
- Season of collection: October
- Value addition: juice, nectar, puree, syrup
- Oval in shape

352. Nadan pottuvellari [*Cucumis melo var. momordica*]

- Location: Konikkara, Thrissur [Lat- 10.4615°N, long- 76.2006°E]
- Name of farmer: Thomas
- Uses: Culinary
- Medicinal value: anti-diabetic and anti-inflammatory
- Season of collection: February
- Value addition: juice, syrup, nectar
- Light green colour

353. Nadan pottuvellari [*Cucumis melo var. momordica*]

- Location: Ezhumattor, Pathanamthitta [Lat- 9.4212°N, long- 76.7019°E]
- Name of farmer: Thomas John
- Uses: Culinary
- Medicinal value: Treat kidney disease and fever
- Season of collection: March
- Value addition: juice, syrup, nectar
- Dark green rind colour

354. Piripilla peecheil [*Luffa cylindrica*]

- Location: Thodupuzha, Idukki [Lat- 9.8959°N, long- 76.7184°E]
- Name of farmer: Antony
- Uses: Culinary
- Medicinal value: Treat and prevent colds
- Season of collection: February
- Value addition: pickle, stew

355. Nadan peecheil [*Luffa cylindrica*]

- Location: Kumily, Idukki [Lat- 9.6050°N, long- 77.1695°E]
- Name of farmer: Jessy
- Uses: Culinary
- Medicinal value: Treat and prevent colds
- Season of collection: March
- Value addition: pickle
- Big size, bright red colour

356. Valari payar [*Canavalia gladiata*]

- Location: Venkulam, Trivandrum [Lat- 8.3194°N, long- 77.1140°E]
- Name of farmer: Rajamony
- Uses: Culinary
- Medicinal value: Treat obesity
- Season of collection: January
- Value addition: baked products
- Long

357. Valari payar [*Canavalia gladiata*]

- Location: Thazhekcode, Malapuram [Lat- 10.9619°N, long- 76.3039°E]
- Name of farmer: Suhara
- Uses: Culinary
- Medicinal value: anti-inflammatory, and anti-allergic properties
- Season of collection: November
- Value addition: baked products
- Long fruit, green colour

358. Valari payar [*Canavalia gladiata*]

- Location: Vallakadavu, Idukki [Lat- 9.5279°N, long- 77.1111°E]
- Name of farmer: Saji
- Uses: Culinary
- Medicinal value: treat headache, cough
- Season of collection: November
- Value addition: baked products
- Dark green large pods

359. Sword bean [*Canavalia gladiata*]

- Location: Cheelachuvadu, Idukki [Lat- 9.9182°N, long- 76.9621°E]
- Name of farmer: Sebastain
- Uses: Culinary
- Medicinal value: anti-inflammatory
- Season of collection: December
- Value addition: baked products
- Dark green pods

360. Nadan valari [*Canavalia gladiata*]

- Location: Vellathooval, Idukki [Lat- 9.9788°N, long- 77.0242°E]
- Name of farmer: Jhonson
- Uses: Culinary
- Medicinal value: anti-inflammatory
- Season of collection: January
- Value addition: baked products
- Green long pods

361. Nadan valari [*Canavalia gladiata*]

- Location: Selliampara, Idukki [Lat- 9.9950°N, long- 76.0190°E]
- Name of farmer: Thomas Varkey
- Uses: Culinary
- Medicinal value: anti-inflammatory
- Season of collection: January
- Value addition: baked products
- Dark green pods

362. Nadan valari [*Canavalia gladiata*]

- Location: Thodupuzha, Idukki [Lat- 9.8959°N, long- 76.7184°E]
- Name of farmer: Sasi K.V
- Uses: Culinary
- Medicinal value: anti-inflammatory
- Season of collection: February
- Value addition: baked products
- Dark green long pod

363. Nadan valari [*Canavalia gladiata*]

- Location: Ayira, Trivandrum [Lat- 8.5241°N, long- 76.9366°E]
- Uses: Culinary
- Medicinal value: anti-inflammatory
- Season of collection: March
- Value addition: baked product
- Dark green long fruit

364. Nadan valari [*Canavalia gladiata*]

- Location: Meenagadi, Wayanad [Lat- 11.6603°N, long- 76.1629°E]
- Name of farmer: Anandan
- Uses: Culinary

- Medicinal value: anti-inflammatory
- Season of collection: March
- Value addition: baked product
- Dark green long fruit

365. Cherry tomato/ Yellow [*Solanum lycopersicum*]

- Location: Pulppally, Wayanad [Lat- 11.7923°N, long- 76.1663°E]
- Name of farmer: Selin
- Uses: Culinary
- Medicinal value: Treat burns and scalds
- Season of collection: March
- Value addition: Pickle and chutney
- Cherry tomato variety, small in size, yellow colour

366. Thakkali [*Solanum lycopersicum*]

- Location: Cherthala, Alappuzha [Lat- 9.6741°N, long- 76.3401°E]
- Name of farmer: Prakashan
- Uses: Culinary
- Medicinal value: Treat burns and scalds
- Season of collection: March
- Value addition: Pickle and chutney
- Oval in shape

367. Small tomato [*Solanum lycopersicum*]

- Location: Adimali, Idukki [Lat- 10.0115°N, long- 76.9528°E]
- Uses: Culinary
- Medicinal value: Treat burns and scalds
- Season of collection: November
- Value addition: sauce, pickle
- Light green fruit

368. Small tomato [*Solanum lycopersicum*]

- Location: Vallakadavu, Idukki [Lat- 9.5279°N, long- 77.1111°E]
- Name of farmer: Kiran
- Uses: Culinary
- Medicinal value: Treat burns and scalds
- Season of collection: November
- Value addition: sauce
- Large round fruits

369. Chunda [*Solanum torvum*]

- Location: Nallornad, Wayanad [Lat- 11.7769°N, long- 76.0266°E]
- Name of farmer: Balakrishnan
- Uses: Culinary
- Medicinal value: Anti-microbial
- Season of collection: September
- Value addition: vattal
- Small in size

370. Chunda [*Solanum torvum*]

- Location: Kanhirode, Kannur [Lat- 11.9190°N, long- 75.6479°E]
- Name of farmer: Shinjith
- Uses: Culinary
- Medicinal value: Anti- ulcer, anti-microbial
- Season of collection: March
- Value addition: power, tea, pickle
- Star shaped flowers

371. Puthari chunda [*Solanum trilobatum*]

- Location: Mananthavadi, Wayanad [Lat- 11.8061°N, long- 76.0599°E]
- Name of farmer: Balakrishnan
- Uses: Culinary
- Medicinal value: Anti- microbial
- Season of collection: September
- Value addition: tea, pickle

372. Chunda [*Solanum torvum*]

- Location: Kalpetta, Wayanad [Lat- 11.6103°N, long- 76.0828°E]
- Uses: Culinary
- Medicinal value: Anti- microbial, anti- cancer
- Season of collection: July
- Value addition: pickle, vattal
- Small in size

VII Development of value-added product

Value addition in Roselle (*Hibiscus sabdariffa*)

Value addition was done in rosella (*Hibiscus sabdariffa*) as per the following methodology and biochemical analysis of powdered rosella was done as per the standard procedures.

Methodology

1. Collection of Material:

Fresh and mature roselle calyces were hand-harvested from healthy plants and sorted to remove damaged or infected parts.

2. Drying of Roselle:

The cleaned calyces were shade-dried at a controlled temperature of 32°C for 14 days to retain color and phytochemical content.

3. Powdering of Roselle:

Once fully dried, the calyces were ground into a fine powder using a mechanical grinder and stored in airtight containers.

4. Biochemical Analysis:

The powdered roselle was analyzed for total phenolic content (Singleton *et al.*, 1999), antioxidant capacity (Singh *et al.*, 2016), flavonoid content (Chang *et al.*, 2002) and anthocyanin content (Giusti and Wrolstad, 2001) using standard laboratory methods.

Biochemical composition of roselle calyx powder

Parameter	Result
Anthocyanin Content	226.99 mg/100 g
Total Phenolic Content	27.90 mg GAE/g
Antioxidant Capacity	48.37 %
Flavonoid Content	212.49 mg QE/ g

The roselle calyx powder can be used as a health promoting herbal tea due to its medicinal properties. It offers several potential health benefits, including lowering blood pressure, supporting heart health, and providing antioxidants to our diet.

Principal Investigator:
Dr. M. Sangeeta Kutty

